

**AGENDA
GREEN BAY METROPOLITAN SEWERAGE DISTRICT
COMMISSION MEETING**

March 27, 2024

**Hybrid meeting held both via Zoom Videoconference and in the
Daniel J. Alesch Training Center, 2231 N. Quincy Street
(If a member of the public or a customer would like to participate in the meeting via Zoom,
please contact NEW Water at 920-432-4893 for access to the videoconference)
8:30 a.m.**

Vision: Protecting our most valuable resource, water

- 1) Safety moment. (T. Sigmund)
- 2) Approval of minutes of Commission meeting held February 28, 2024. (T. Sigmund)
- 3) Adopt Retirement Resolutions for employee:
 - a. Trisha Brown (T. Sigmund)
[Click Here: Resolution](#)
- 4) Request Commission approval of De Pere Facility Pumping and Headworks Project contingency increase for project design changes to procure equipment for Clean Water Loan Funding. (B. Angoli)
[Click Here: Memo](#)
- 5) Convene in closed session under State Statute 19.85(1)(e) for the purpose of deliberating or negotiating the purchase of public properties, the investing of public funds, or conducting other specified public business, whenever competitive or bargaining reasons require a closed session and State Statute 19.85 (1) (g) for the purpose of conferring with legal counsel for the Commission who is rendering oral or written advice concerning strategy to be adopted by the Commission with respect to litigation in which it is or is likely to become involved:
 - a) Litigation involving Bayview Interceptor.
 - b) Potential litigation resulting from environmental testing by significant industrial user.
 - c) Potential transfer of certain interceptor segments pursuant to Section 5.05 of the Sewer Use Ordinance to a municipality.
- 6) Reconvene in open session.
- 7) Update of projects:
 - a) DPF Tertiary Filtration and Service Water Improvements Project. (B. Angoli)
[Click Here: Project Report](#)
- 8) 2023 Adaptive Management Program Update. (E. Houghton)
[Click Here: Memo](#)
[Click Here: Presentation](#)

- 9) 2023 Pretreatment Program Enforcement Summary. (S. Georgel)
[Click Here: Memo](#)
[Click Here: Attachment](#)
- 10) 2023 Industrial Achievement Awards. (S. Georgel)
[Click Here: Memo](#)
- 11) PFAS Monitoring Update. (S. Thieszen)
[Click Here: Memo](#)
[Click Here: Presentation](#)
[Click Here: Summary](#)
- 12) Executive Director Search Update. (E. Tietzen)
[Click Here: Memo](#)
- 13) January and February 2024 Financials. (C. Mueller)
[Click Here: Memo](#)
[Click Here: Income Statement](#)
[Click Here: Income Statement Legends](#)
[Click Here: Statement of Net Position](#)
[Click Here: Statement of Net Position Legends](#)
- 14) February 2024 Operations report. (P. Wescott)
[Click Here: Memo](#)
[Click Here: Effluent Report – Green Bay Facility](#)
[Click Here: Graph of Effluent Report](#)
[Click Here: Effluent Report –De Pere Facility](#)
[Click Here: Graph of Effluent Report](#)
[Click Here: R2E2 Energy Report](#)
[Click Here: R2E2 Energy Graph](#)
- 15) Executive Director’s report: (T. Sigmund)
[Click Here: Memo](#)
- a) April Commission Meeting.
 - b) Ethan Wandersee Promoted to Operations Trainer.
 - c) 2024 NEW Watershed Champion Award & UWGB Symposium.
 - d) NEW Water Policies.

Retirement Resolution

WHEREAS, Trisha Brown has steadfastly and devotedly served NEW Water, the brand of the Green Bay Metropolitan Sewerage District, for over 10 years and;

WHEREAS, she has provided exemplary service to NEW Water, having contributed practical and valuable skills, most notably as a Human Resources Manager.

WHEREAS, she retired from NEW Water on February 14, 2024.

NOW, THEREFORE, BE IT RESOLVED that NEW Water recognizes Trisha Brown's faithful service with a commendation and expression of gratitude, and hereby makes this commendation a part of its official record.

Resolution #24-004
Dated: March 27, 2024

Kathryn Hasselblad, Commission President

James Blumreich, Commission Secretary

Memorandum

TO: Commission
Tom Sigmund

FROM: Bill Angoli

DATE: March 20, 2024

SUBJECT: De Pere Facility – Pump Station and Headworks Project – Contingency Increase

Background

At the September 22, 2022 meeting, the Commission approved a design services agreement with Strand Associates, Inc. for the DPF Pumping & Headworks Project in the amount of \$819,365 with an approved contingency of \$82,000.

In February of 2024, the Wisconsin Department of Natural Resources' (WDNR) Clean Water Fund Program (CWFP) notified potential borrowers that the CWFP would not be able to fund all projects in state fiscal year (SFY) 2024. As a result, the DPF Pumping & Headworks Project in its entirety will not be funded in SFY2024 as originally planned. There are three primary alternatives to adjust to this unprecedented funding reality:

- Defer funding to SFY2025, resulting in losing the project's adjustment period waiver to the Build America, Buy America (BABA) requirements (increased project costs estimated to be \$2.85M to \$3.8M)
- Fund through the project with a general obligation bond, resulting in significantly higher financing costs over the life of the bond (estimated to be \$3.8M)
- Phase the project with CWFP funding, resulting in an equipment procurement contract loan in SFY2024 and construction contract loan in SFY2025 thus allowing the BABA waiver to remain in effect for the entire project.

Staff feel the project phasing option is the best alternative to avoid project delays and alternative financing costs. Staff is requesting an increase in contingency to incorporate the phasing of this project into the design including the following:

- Developing specifications and plans to purchase screening equipment and influent pumps for submittal to WDNR for approval and the CWFL application.
- Providing engineering services for bidding and services for equipment purchase and shop drawing review
- Modifying existing construction plans and specifications for equipment procurement approach

During the time that the funding issue became clear, staff were negotiating an amendment with the consultant for additional project design elements. The costs associated with the following additional design scope items is included in the requested contingency increase:

- alternative screening and grit tank locations
- design of scum effluent pumping system

- incorporation of arc flash electrical protection equipment

In addition to the requested contingency increase, given that time is of the essence, staff are recommending that Commission authorize the Executive Director to complete the design agreement amendment negotiations and execute the amendment(s).

The following table summarizes the project financials to date:

Date	Description	Agreement Amount	Contingency Authorized	Contingency Used	Remaining Contingency
9/22/2022	Original Project Award -Evaluation	\$819,356	\$82,000		\$82,000
1/5/2023	Amendment #1 - New Screening Building Alternative Evaluation	\$20,700		\$20,700	\$61,300
10/10/2023	Amendment #2 - Ferric Chloride and Bioxide Location Alternatives	\$27,500		\$27,500	\$33,800
3/27/2024	Request for Contingency Increase from Commission		\$200,000		\$233,800
	Totals		\$282,000	\$48,200	\$233,800

Recommendation

Staff recommends Commission approval to increase the contingency for the De Pere Facility Pump Station and Headworks Project by \$200,000 for a total authorized contingency of \$282,000 to be administered under the authority of the Executive Director and to authorize the Executive Director to conclude negotiations of and execute the design amendment(s) up to the approved contingency amount.

Commission Action

Request Commission approval to increase the contingency for the De Pere Facility Pump Station and Headworks Project by \$200,000 for a total authorized contingency of \$282,000 to be administered under the authority of the Executive Director and to authorize the Executive Director to conclude negotiations of and execute the design amendment(s) up to the approved contingency amount.

cc: Nate Qualls

Monthly Construction Progress Report

Project Name: DPF Tertiary Filtration and Service Water Improvements Project
 Project Number: 18-030-CO
 Report Number: 229
 Reporting Period: February 14, 2024 – March 13, 2024
 Project Manager: Bill Angoli

Contractor: Miron Construction Company			
Contract Cost		Contract Time	
	<u>Amount</u>		<u>Date</u>
Original Contract Sum:	\$ 7,873,469.00	Original Substantial Completion:	<u>7/16/2022</u>
Net Change by Change Orders:	\$ 638,445.45	Original Contract Completion:	<u>9/13/2022</u>
Contract Sum to Date:	\$ 8,511,914.45	Revised Substantial Completion:	<u>5/1/2023</u>
Total Complete and Stored to Date	\$ 8,441,914.45	Revised Final Completion:	<u>5/23/2023</u>
Retainage:	\$ 212,797.86		
Total Earned Less Retainage:	\$8,229,116.59	Contract Milestones	
Previous Payments:	\$ 8,151,901.55	Do milestones apply?	No
Balance to Finish with Retainage:	\$282,797.86	If yes, list:	

Contract Contingency

Authorized Amount: \$ 787,347.00 Amount Used: \$ 638,445.45

Work Progress

Contract Budget Spent: 98% Contract Work Completed: 98%

Work Accomplished During Reporting Period

Results from laboratory testing indicated silica may be causing the plugging problem on the filter media. NEW Water is considering sources from our service area and the manufacturer has hired a firm to review and test options for removal of the silica from the filter media. The manufacturer will propose options for potential pilot testing on the filter media. We are still working with the contractor and manufacturer on project closeout.

Work Scheduled for Next Reporting Period

Manufacturer, contractor, engineer and NEW Water will work towards project close out while continuing the work to resolve the solids media plugging issue. Manufacturer to provide report on findings from additional media testing in early March.

Outstanding Issues

There is an issue with the filtration system media plugging with solids. Manufacturer of the filtration equipment is evaluating alternatives to remove the solids from the media in order to meet performance requirements for system operation.

Issues Resolved

None

Memorandum

TO: Commission
Tom Sigmund

FROM: Erin Houghton

DATE: March 1, 2024

SUBJECT: 2023 NEW Watershed Adaptive Management Program Presentation

Background

2023 was the second year of Adaptive Management for permit compliance under the new Wisconsin Pollutant Discharge Elimination System (WPDES) permit starting April 1, 2022 with monthly DMR reporting and annual report requirements. The NEW Watershed Adaptive Management Program has been actively working in Ashwaubenon Creek and Dutchman Creek (ACDC) collecting background water quality and conservation concern information since 2018, with some best management practices implemented as early as 2021. A brief presentation will be given highlighting program logistics, funding strategy, accomplishments from the NEW Watershed Adaptive Management Program, and next steps for 2024.

Recommendation

This Commission item is informational only.

Commission Action

No Commission action is required.





NEW Watershed Program Updates

~ Adaptive Management ~

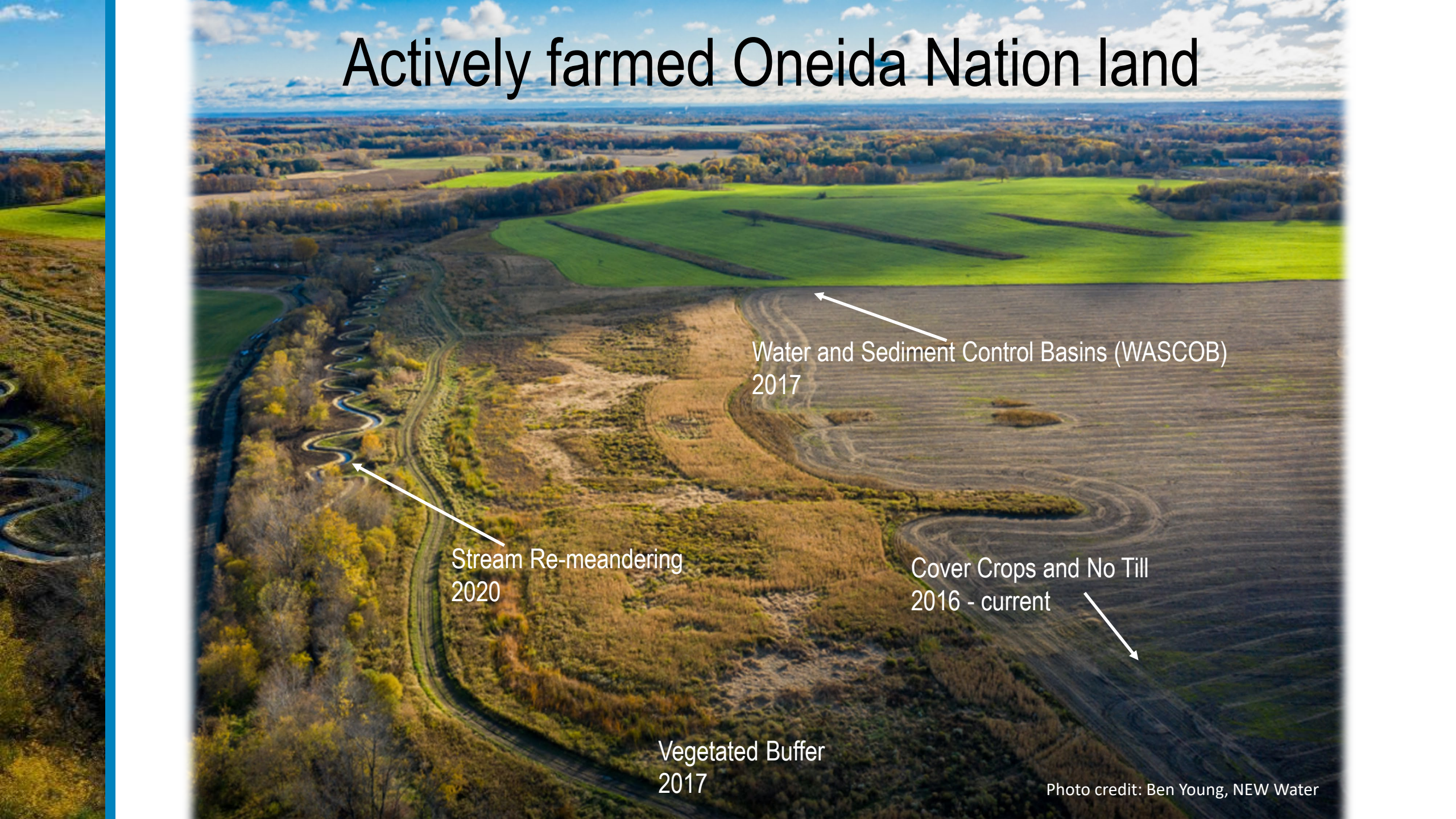
Water quality & innovative conservation at a watershed scale

Erin Houghton, MS
Watershed Programs Manager
ehoughton@newwater.us

*Protecting our most
valuable resource,
water*



Actively farmed Oneida Nation land



Water and Sediment Control Basins (WASCOB)
2017

Stream Re-meandering
2020

Cover Crops and No Till
2016 - current

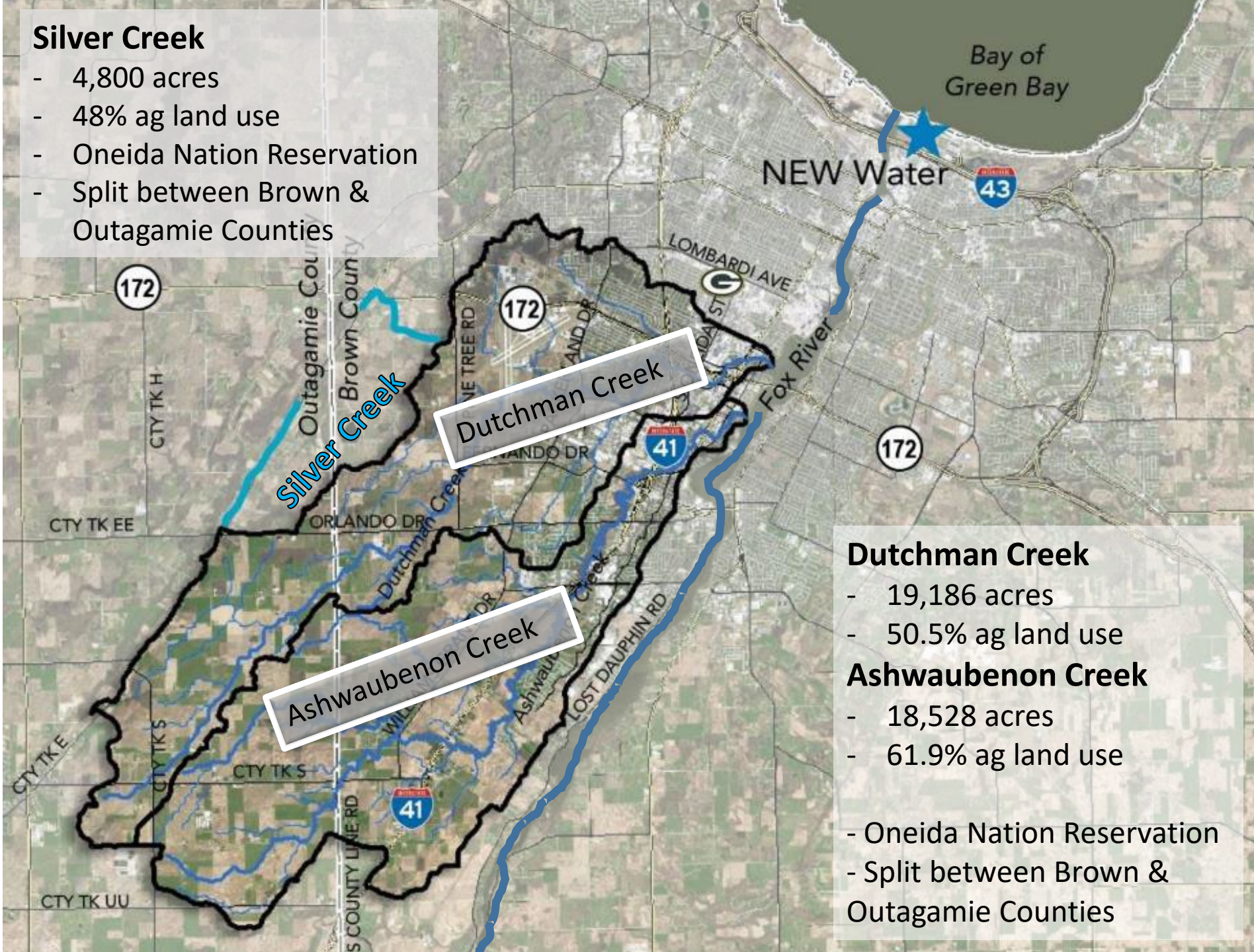
Vegetated Buffer
2017

Photo credit: Ben Young, NEW Water



Silver Creek

- 4,800 acres
- 48% ag land use
- Oneida Nation Reservation
- Split between Brown & Outagamie Counties



Dutchman Creek

Ashwaubenon Creek

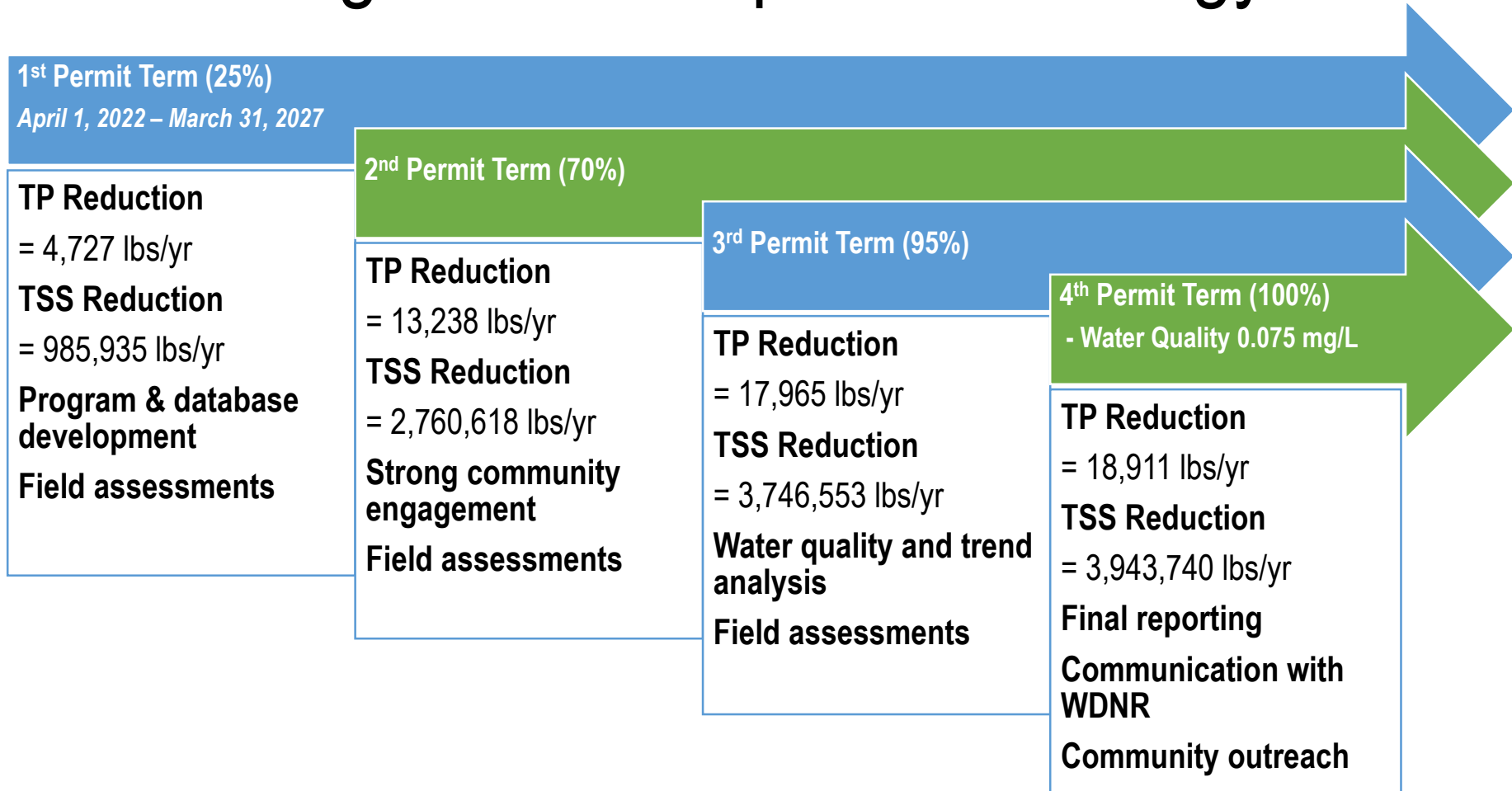
Dutchman Creek

- 19,186 acres
- 50.5% ag land use

Ashwaubenon Creek

- 18,528 acres
- 61.9% ag land use
- Oneida Nation Reservation
- Split between Brown & Outagamie Counties

NEW Water's Adaptive Management Compliance Strategy



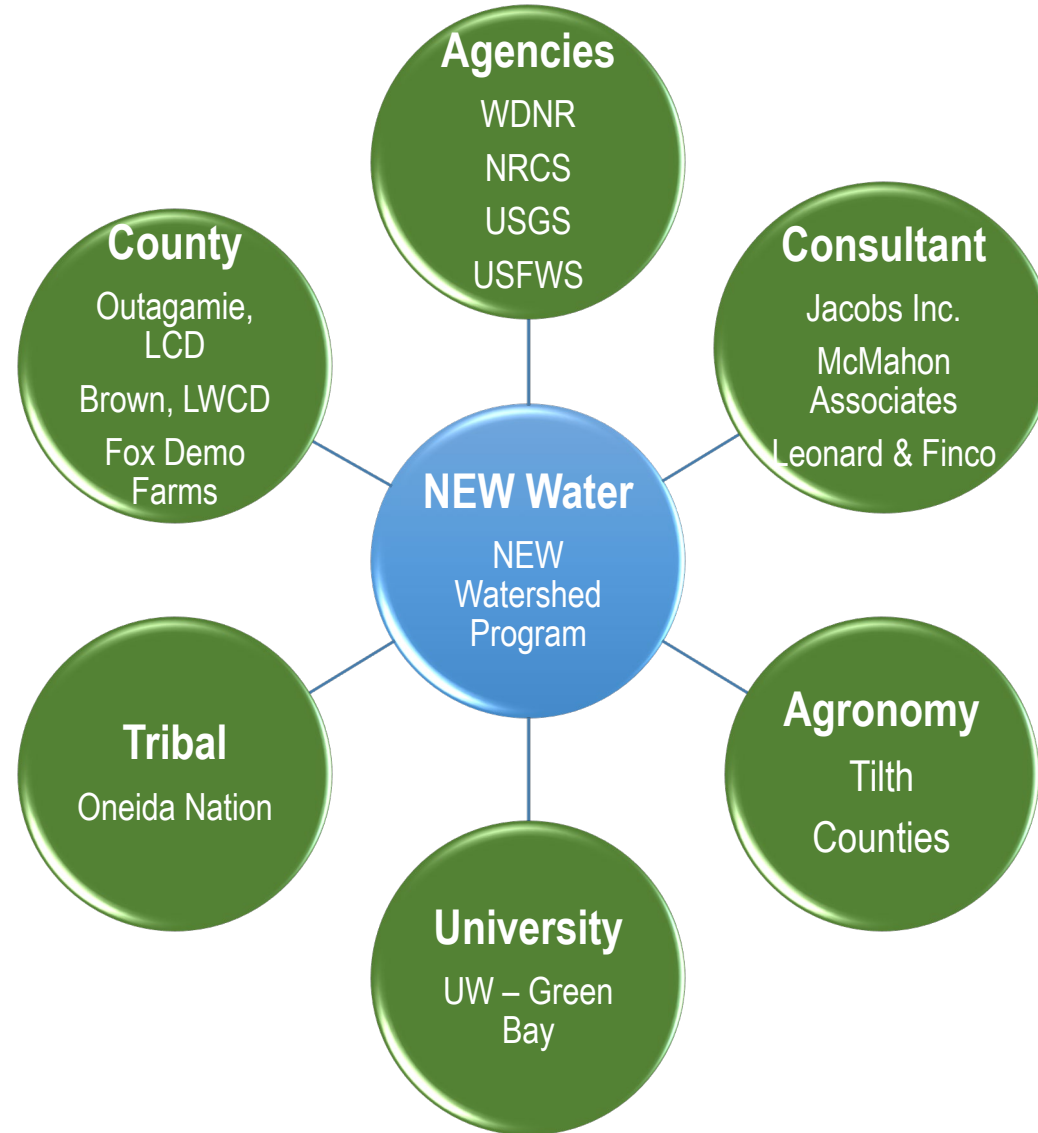
1 permit term = 5 years

4 permit terms = min 20 years

NEW Watershed Program Goals

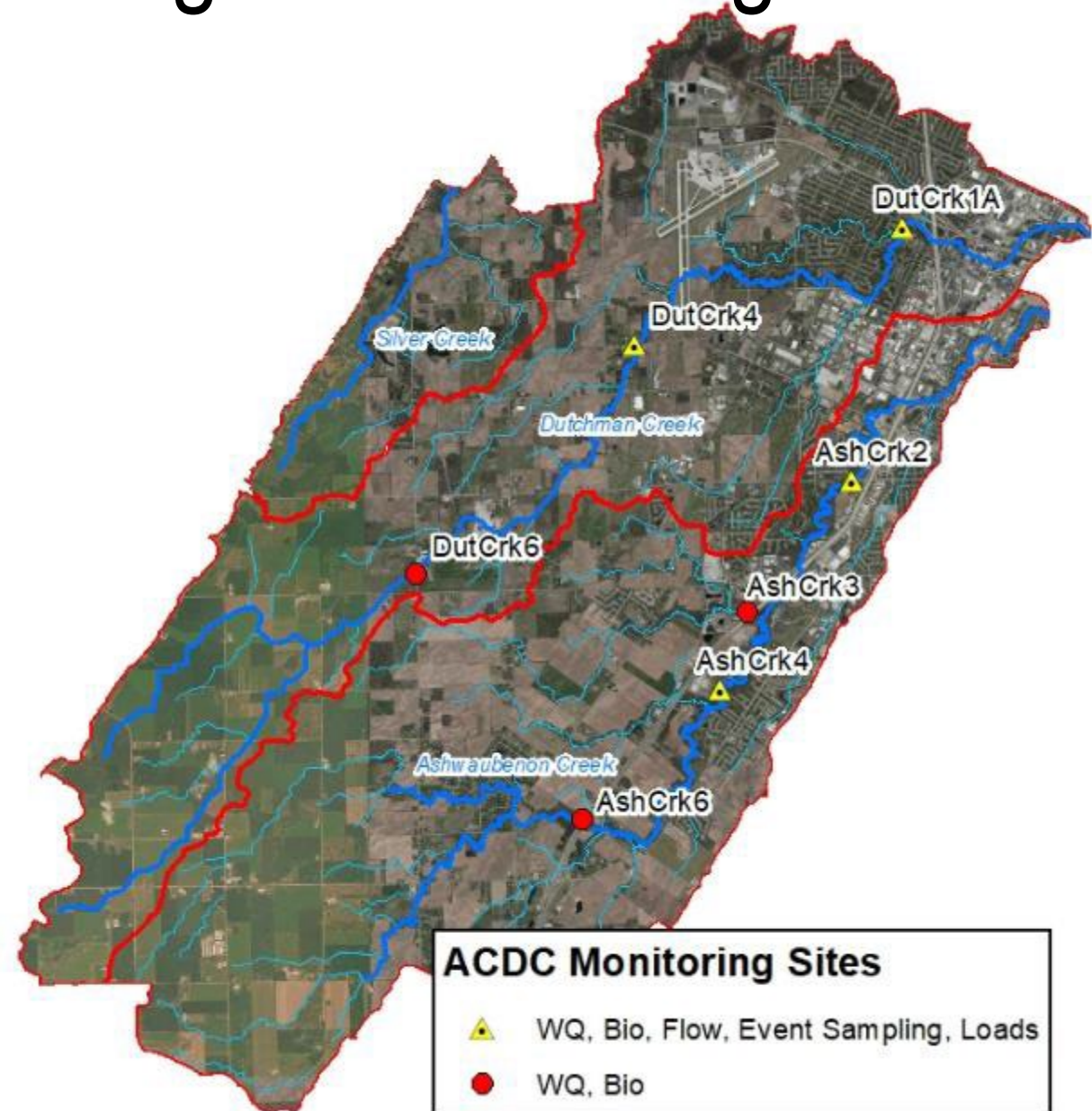
- Maintain a diverse program team
 - Outagamie & Brown Counties, Oneida Nation, local agronomists, consultant team, NRCS, USGS, WDNR, non-profits, universities, transportation groups, municipalities and others
- Achieve the TMDL reduction targets
 - 18,911 lbs/yr of phosphorus
 - 3.9 million lbs/yr of sediment
- Measure water quality and biological improvements in ACDC and Lower Fox River
 - 0.075 mg/L Ashwaubenon & Dutchman Creeks
- Financial model estimate
 - \$40 million dollars over 20 years

Core Program Collaborations



ACDC Water Quality & Biological Monitoring

- Water Quality
 - 7 water quality monitoring sites
 - TSS, TP, dissolved TP, TKN
 - Multi parameter sonde recordings
- USGS Gage Stations
 - 4 gage and event samplers
 - Installed and operational
- Biological Monitoring
 - Contract with UWGB & Oneida Nation to perform annual biological sampling
 - 2018 - 2021 fall sampling complete
 - 9 sites sampled: fish, inverts, habitat
 - Samples sorted out for identification and review



Agricultural Conservation Pra

- Structural (hard) Practices*
 - *Grassed Waterways*
 - *Critical Area Plantings*
 - *Buffers/Filter Strips*
 - *WASCOBs/Infiltration Basins*
 - ***Agricultural Runoff Treatment Systems***
 - *Two Stage Ditches*
 - *Streambank Stabilization/Restoration*
 - *Tile Drainage Treatment*
 - *Wetlands*
 - *Stormwater Management*
- Operational (soft) Practices
 - *Tillage/Residue Management*
 - *No-till/reduced till*
 - *Cover Crops*
 - *Inter-seeding, aerial seeding*
 - *Manure Application Methods & Timing*
 - *Low disturbance manure application*

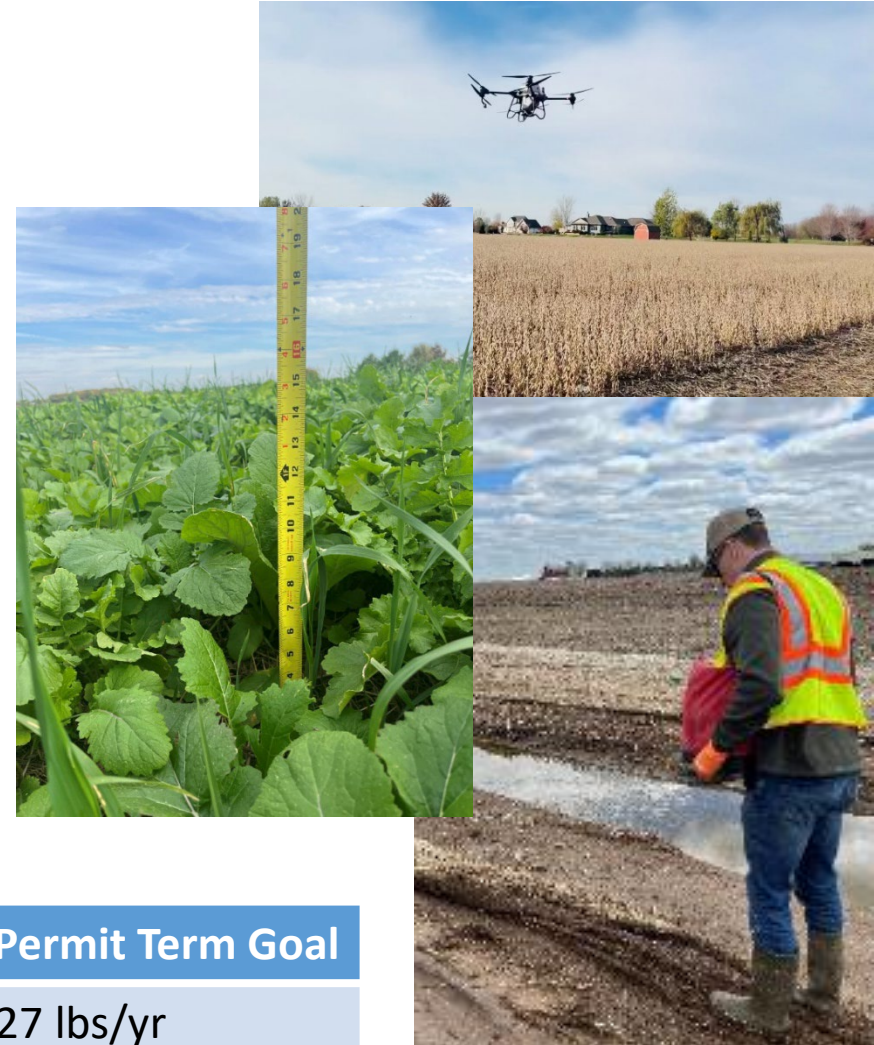


*Structural practices are tied to the deed for permanence

NEW Water's Adaptive Management Program 2023 Updates: Ashwaubenon & Dutchman Creeks

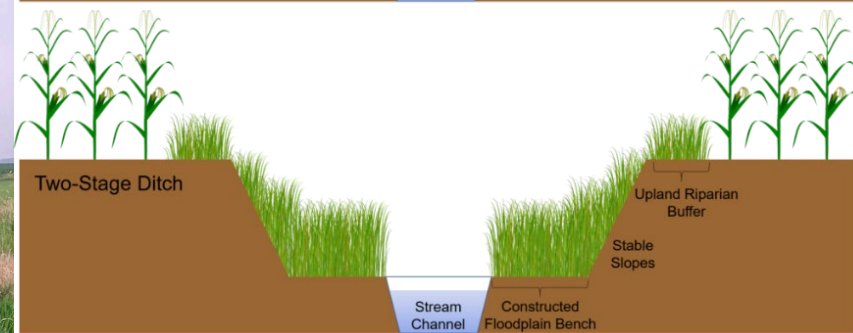
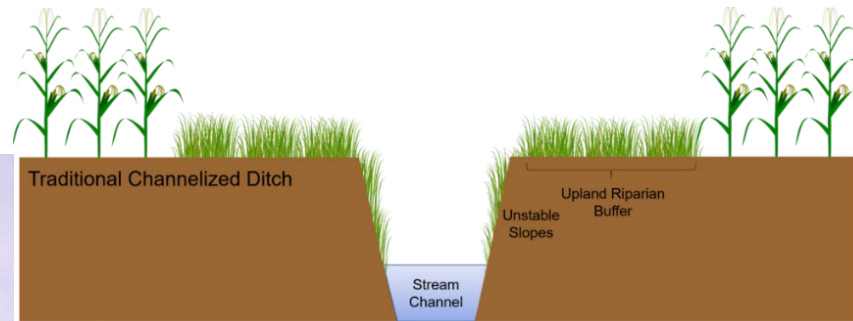
NEW Watershed Program: Rural Implementation Summary

- Operational (soft) Practices 2023: 113 (*cost share opportunities*)
 - 3,030 acres of management practices
 - Cover crop, residue/no-till, low disturbance manure application
 - TP Reductions: 3,455.5 lbs/yr
 - TSS Reductions: 1,190,830 lbs/yr
- Structural (hard) Practices: 37 (*cost share opportunities*)
 - Grassed waterways, 2-stage ditches, buffers/filter strips, wetland, critical area plantings (CAPs)
 - TP Reductions: 1,088 lbs/yr
 - TSS Reductions: 796,600 lbs/yr
- Fox Demo Farms - Clean Water Pledge Farms: 16



Reduction Goals	2022 - 2023	1 st Permit Term Goal
Total Phosphorus (TP)	4,543.5 lbs/yr	4,727 lbs/yr
Total Suspended Solids (TSS)	1,987,430 lbs/yr	985,935 lbs/yr

Two-Stage Ditches with Harvestable Buffers



NEW Water's Adaptive Management Program 2023 Updates: Ashwaubenon & Dutchman Creeks

- NEW Watershed Program: Urban Summary
 - Collaboration with Austin Straubel International Airport
 - Support their GRB Water Stewardship Program
 - Contracting for implementation of practices starting in 2024
 - Coordination on new capture and treatment of wastewater on airport grounds
 - Collaboration and Coordination with Wisconsin Department of Transportation
 - I-41 expansion & South Bridge Connector construction
 - Collaboration with Communities along the Lower Fox River and Ashwaubenon and Dutchman Creeks
 - Area of Concern projects at the mouth of Ashwaubenon Creek and mouth of Dutchman Creek



NEW Water's Adaptive Management Program 2023 Updates: Grant Projects

- **NEW Water Community Grants**
 - Finished NEW Water Green Infrastructure Assessment Grant
 - Continued Partnership and Grant support for East River Collaborative
 - Concluded and started a new United States Forestry Service Great Lakes Restoration Initiative tree planting grant
 - Includes many NEW Water municipalities and Oneida Nation
- **NEW Water Watershed Grants**
 - Finished GLRI Buffer Grant
 - Sustain the Bay Grant – SHED Signage
 - USFWS Coastal Grant – Wetlands
 - NRDA Grant – Streambank stabilization & restoration

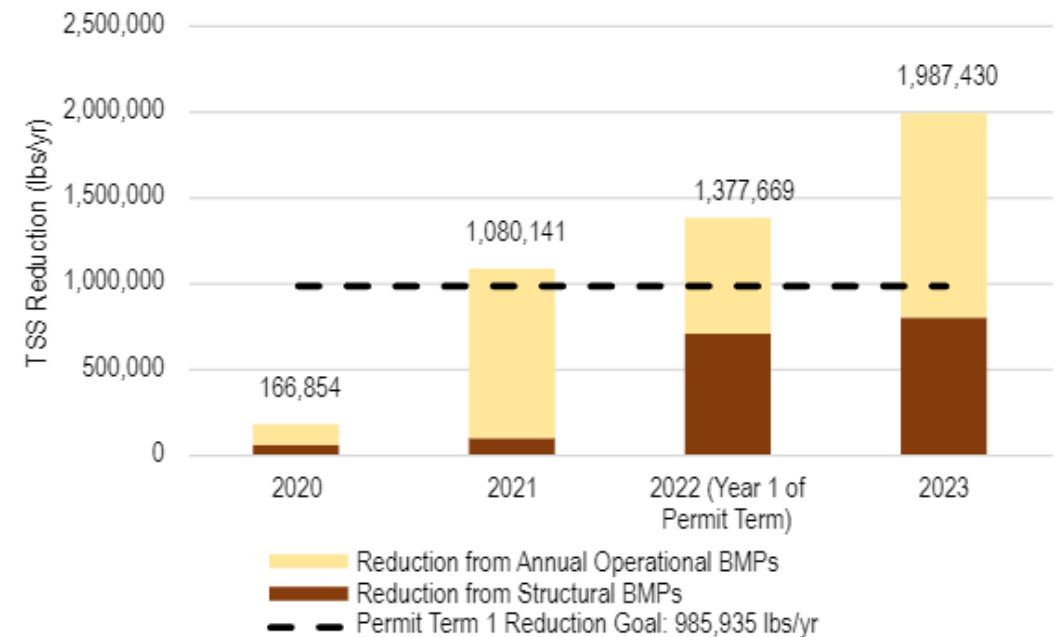
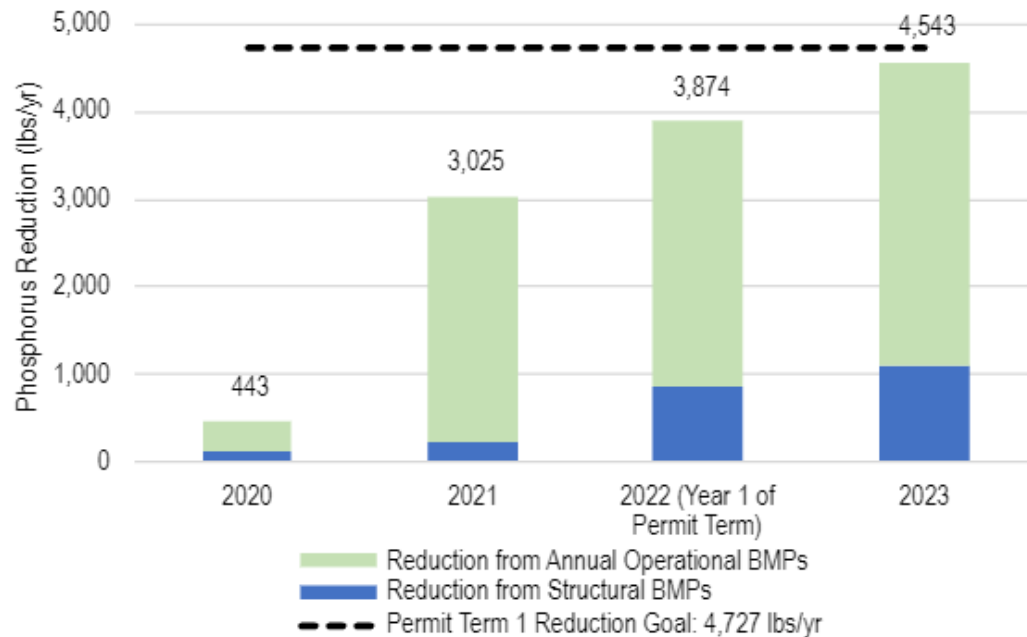


ACDC Implementation Costs & Reductions:

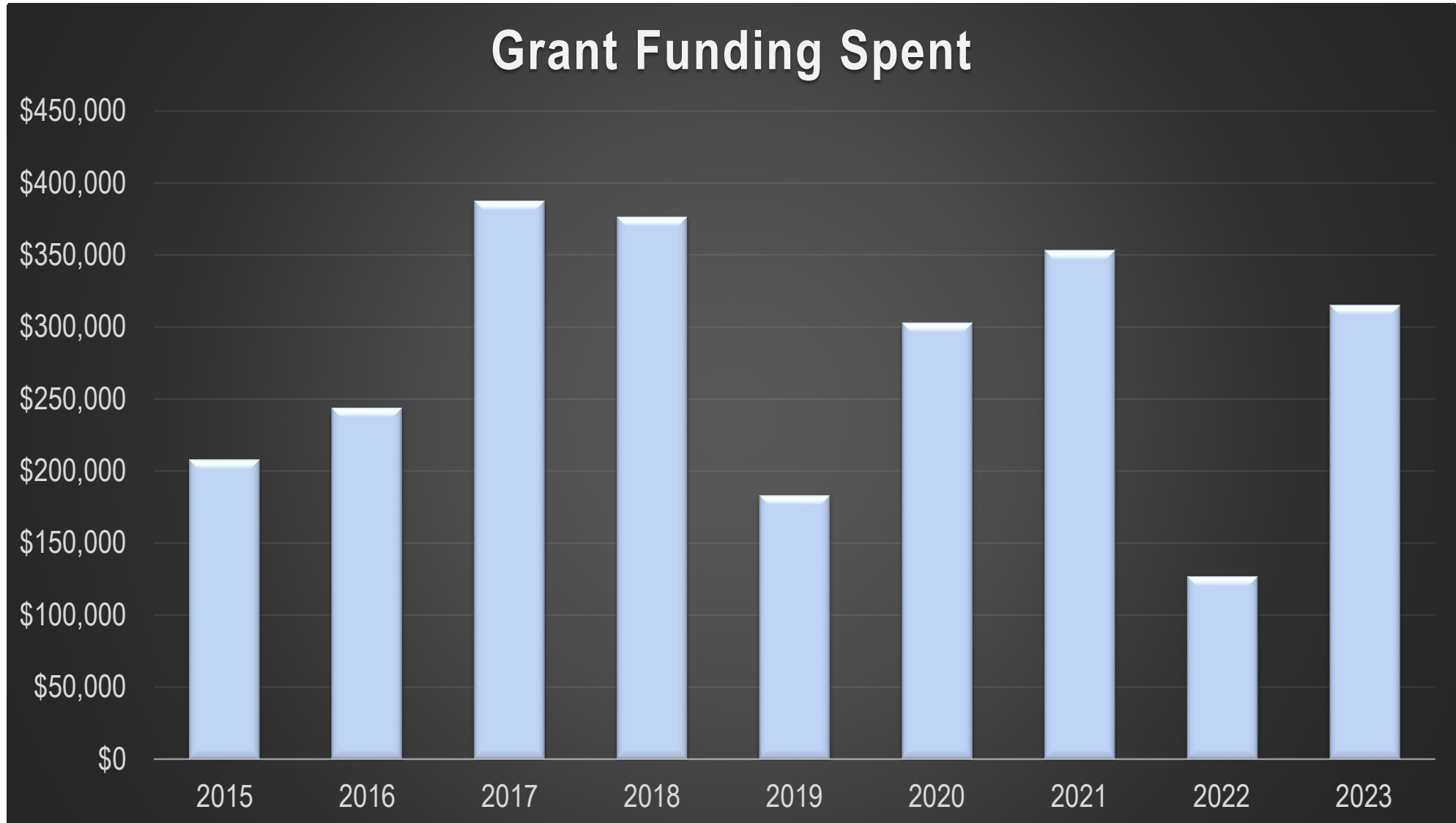
ACDC Implementation Costs	NEW Water	NRCS Cost Share	Grants	Total
2020	\$40,991			\$40,991
2021	\$127,316	\$77,359	\$41,540	\$246,215
2022	\$184,838	\$321,673	\$43,400	\$549,911
2023	\$181,506	\$113,996	\$193,918	\$489,420



Total Conservation Practice Investment To Date: \$1,326,537



NEW Water Grant Funding:



Next Steps in NEW Watershed Program

- Program Development:
 - Utilize BMP prioritization, sign new contracts, program timeline update, sub-committee development, reporting, further develop GIS tools and technical guidance documents as needed
- Flow, water quality and biological monitoring began late 2018 and will continue next 20+ years
- Continue communication and outreach with landowners & farmers
- Build resilient watersheds to effectively manage variable climate conditions

Teamwork Makes the Dream Work!

Thank You (yawn'kó)!



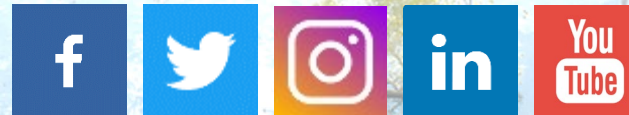
LOWER FOX
Demonstration Farms Network



Questions / Comments?

Thank You!

Stay tuned to NEW Water news



Thank you to Ben Young, Angela Kowalzek-Adrians, Jeff Smudde, Nikki Raimer, Sam Welch, Jacobs consulting, Sarah Bartlett, the NEW Water laboratory & many others for ongoing support executing this Program.

#LoveYourWatershed

-  Plant a tree or garden
-  Pick up yard waste
-  Clear & adopt a storm drain

newwater.us/LoveYourWatershed

NEW Water
The brand of the Green Bay Metropolitan Sewerage District



Practice Funding Strategy



- Structural Practices:
- 100% Structural practice cost:
 - Natural Resources Conservation Service (NRCS) Cost Share
 - Environmental Quality Incentives Program (EQIP) Cost Share
 - EQIP Regional Conservation Partnership Program (RCPP)
 - NEW Water Cost Share
- Signed Cost Share Agreement (CSA)
 - CSA with landowner
 - For private landowners, practice tied to deed
 - Have specific operation and maintenance documents to accompany practice
- Operational Practices:
- NEW Water Cost Share:
 - Pay for Performance Program
 - NRCS EQIP
- Signed Cost Share Agreement
 - CSA with landowner or operator
 - Have specific operation and maintenance documents to accompany practice

Memorandum

TO: Commission
Tom Sigmund

FROM: Sara Georgel

DATE: March 14, 2024

SUBJECT: 2023 Pretreatment Enforcement Summary

Significant Noncompliance for Publication

NEW Water is required to publish the following Significant Industrial Users for being in Significant Noncompliance in 2023:

Badger Sheet Metal Works was in Significant Noncompliance and received a Notice of Violation for: 1) exceeding the categorical monthly average limit for zinc at Sample Point #1 as outlined in its Industrial Wastewater Discharge Permit during the monitoring period of January 1 – June 30, 2023, and 2) exceeding the categorical daily maximum limit and categorical monthly average limit for zinc at Sample Point #4 as outlined in its Industrial Wastewater Discharge Permit during the monitoring period of July 1 – December 31, 2023.

Green Bay Packaging – Shipping Container Division was in Significant Noncompliance and received a Notice of Violation for exceeding the local limits for copper as outlined in its Industrial Wastewater Discharge Permit during the monitoring period of January 1 – June 30, 2023.

Medalcraft Mint, Inc. was in Significant Noncompliance and received a Notice of Violation for exceeding the categorical daily maximum limit and categorical monthly average limit for copper, the local limit for mercury, the categorical monthly average limit for nickel, and the categorical daily maximum limit and categorical monthly average limit for zinc as outlined in its Industrial Wastewater Discharge Permit during the monitoring period of July 1 – December 31, 2023.

Nouryon Pulp and Performance Chemicals LLC – Green Bay Expancel was in Significant Noncompliance and received a Notice of Violation for failure to monitor pH as outlined in its Industrial Wastewater Discharge Permit during the monitoring period of January 1 – June 30, 2023.

Packerland Whey Products, Inc. (d.b.a. Fermented Nutrition Corp.) was in Significant Noncompliance and received Notice of Violations for: 1) failure to monitor pH as outlined in its Industrial Wastewater Discharge Permit during the monitoring period of January 1 – June 30, 2023, and 2) discharging wastewater into the Green Bay Metropolitan Sewerage District sewerage system, which includes the Village of Luxemburg's wastewater treatment system, causing a detrimental effect, specifically interference, as outlined in the Green Bay Metropolitan Sewerage District Sewer Use Ordinance during the monitoring period of January 1 – June 30, 2023.



RR Donnelley & Sons Company – Green Bay was in Significant Noncompliance and received a Notice of Violation for failure to monitor correctly for mercury and failure to monitor flow as outlined in its Industrial Wastewater Discharge Permit during the monitoring period of January 1 – June 30, 2023.

RR Donnelley & Sons Company – De Pere was in Significant Noncompliance and received a Notice of Violation for failure to monitor correctly for mercury as outlined in its Industrial Wastewater Discharge Permit during the monitoring period of January 1 – June 30, 2023.

Sustana Fiber, LLC was in Significant Noncompliance and received a Notice of Violation for failure to monitor arsenic, cadmium, chromium, copper, lead, nickel, and zinc as outlined in its Industrial Wastewater Discharge Permit during the monitoring period of January 1 – June 30, 2023.

Notices of Violation

Green Bay Packaging – Shipping Container Division received a Notice of Violation for exceeding the local limits for copper as outlined in its Industrial Wastewater Discharge Permit during the monitoring period of July 1 – December 31, 2023.

Notices of Noncompliance

Astro Industries received a Notice of Noncompliance for exceeding the categorical monthly average limit for copper as outlined in its Industrial Wastewater Discharge Permit during the monitoring period of July 1 – December 31, 2023.

Badger Sheet Metal Works received a Notice of Noncompliance for exceeding the categorical daily maximum limit for chromium at Sample Point #2 as outlined in its Industrial Wastewater Discharge Permit during the monitoring period of January 1 – June 30, 2023.

Medalcraft Mint, Inc. received a Notice of Noncompliance for exceeding the categorical daily maximum limit and categorical monthly average limit for copper as outlined in its Industrial Wastewater Discharge Permit during the monitoring period of January 1 – June 30, 2023.

NDSM Holdings, LLC received a Notice of Noncompliance for exceeding the limits for pH as outlined in its Industrial Wastewater Discharge Permit during the monitoring period of July 1 – December 31, 2023.

Paper Converting Machine Company – Northern Engraving Division received a Notice of Noncompliance for exceeding the categorical daily maximum limit and categorical monthly average limit for chromium at Sample Point #1 as outlined in its Industrial Wastewater Discharge Permit during the monitoring period of July 1 – December 31, 2023.

Pioneer Metal Finishing LLP received a Notice of Noncompliance for exceeding the limits for pH at Sample Point #1 as outlined in its Industrial Wastewater Discharge Permit during the monitoring period of July 1 – December 31, 2023.

Corrective Action

All facilities have taken or are in the process of taking corrective action in order to return to full compliance.

NEW Water continues to provide assistance to its pretreatment industries when compliance issues arise, in an effort to help industries return to compliance and minimize recurring noncompliance.

Recommendation

This Commission item is informational only.

Commission Action

No Commission action is required.

Attachment

Form 12

Annual Publication of Significant Violators in 2023

In accordance with the requirements of 40 CFR 403.8(f)(2)(viii) - General Pretreatment Regulations for Existing and New Sources of Pollution, NR 211.23 - General Pretreatment Requirements, the Green Bay Metropolitan Sewerage District Sewer Use Ordinance, and the terms of the Wisconsin Pollutant Discharge Elimination System permit issued by the Wisconsin Department of Natural Resources, NEW Water, the brand of the Green Bay Metropolitan Sewerage District, is required to publish a list of industrial users that were in Significant Noncompliance with applicable pretreatment standards or requirements during calendar year 2023.

NEW Water reports the following incidents of Significant Noncompliance by significant industrial users at some time during calendar year 2023:

Badger Sheet Metal Works was in Significant Noncompliance and received a Notice of Violation for: 1) exceeding the categorical monthly average limit for zinc at Sample Point #1 as outlined in its Industrial Wastewater Discharge Permit during the monitoring period of January 1 – June 30, 2023, and 2) exceeding the categorical daily maximum limit and categorical monthly average limit for zinc at Sample Point #4 as outlined in its Industrial Wastewater Discharge Permit during the monitoring period of July 1 – December 31, 2023.

Green Bay Packaging – Shipping Container Division was in Significant Noncompliance and received a Notice of Violation for exceeding the local limits for copper as outlined in its Industrial Wastewater Discharge Permit during the monitoring period of January 1 – June 30, 2023.

Medalcraft Mint, Inc. was in Significant Noncompliance and received a Notice of Violation for exceeding the categorical daily maximum limit and categorical monthly average limit for copper, the local limit for mercury, the categorical monthly average limit for nickel, and the categorical daily maximum limit and categorical monthly average limit for zinc as outlined in its Industrial Wastewater Discharge Permit during the monitoring period of July 1 – December 31, 2023.

Nouryon Pulp and Performance Chemicals LLC – Green Bay Expancel was in Significant Noncompliance and received a Notice of Violation for failure to monitor pH as outlined in its Industrial Wastewater Discharge Permit during the monitoring period of January 1 – June 30, 2023.

Packerland Whey Products, Inc. (d.b.a. Fermented Nutrition Corp.) was in Significant Noncompliance and received Notice of Violations for: 1) failure to monitor pH as outlined in its Industrial Wastewater Discharge Permit during the monitoring period of January 1 – June 30, 2023, and 2) discharging wastewater into the Green Bay Metropolitan Sewerage District sewerage system, which includes the Village of Luxemburg's wastewater treatment system, causing a detrimental effect, specifically interference, as outlined in the Green Bay Metropolitan Sewerage District Sewer Use Ordinance during the monitoring period of January 1 – June 30, 2023.

RR Donnelley & Sons Company – Green Bay was in Significant Noncompliance and received a Notice of Violation for failure to monitor correctly for mercury and failure to monitor flow as outlined in its Industrial Wastewater Discharge Permit during the monitoring period of January 1 – June 30, 2023.

RR Donnelley & Sons Company – De Pere was in Significant Noncompliance and received a Notice of Violation for failure to monitor correctly for mercury as outlined in its Industrial Wastewater Discharge Permit during the monitoring period of January 1 – June 30, 2023.

Sustana Fiber, LLC was in Significant Noncompliance and received a Notice of Violation for failure to monitor arsenic, cadmium, chromium, copper, lead, nickel, and zinc as outlined in its Industrial Wastewater Discharge Permit during the monitoring period of January 1 – June 30, 2023.

All significant industrial users have taken or are in the process of taking corrective action in order to return to full compliance.

Memorandum

TO: Commission
Tom Sigmund

FROM: Sara Georgel

DATE: March 14, 2024

SUBJECT: 2023 Industrial Achievement Awards

Background

In 2012, NEW Water implemented the Industrial Achievement Awards, which gives recognition to Significant Industrial Users (SIUs) that demonstrate exceptional compliance.

The awards are given at three different levels and depend on the number of consecutive years of meeting established requirements. These levels are as follows:

Silver Award: Met requirements for one or two consecutive years
Gold Award: Met requirements for three or four consecutive years
Platinum Award: Met requirements for at least five consecutive years

SIUs are evaluated against the following criteria:

1. The industry must meet NEW Water's definition of a Significant Industrial User (SIU) and been in operation and permitted for the entire calendar year.
2. The facility must be in full compliance with its Industrial Wastewater Discharge permit.
3. The SIU must meet all permit self-monitoring and reporting requirements during the calendar year.
4. The SIU must not have any numerical effluent limit violations except for pH during the calendar year. The pH criteria are as follows:
 - No pH may be recorded at a value ≤ 4.6 or ≥ 12.9 s.u.
 - During each month, the total time that the pH values were outside of the industry's permit limits may not exceed 1.0% of the total time that pH was monitored during that month.

Recipients for 2023

NEW Water has evaluated its 44 SIUs against the above criteria.

The following 11 SIUs received the 2023 Platinum Award:

- Brown County Solid Waste – East Landfill
- Green Bay Anodizing, Inc.
- Green Bay Austin Straubel International Airport
- Green Bay Packaging - Coated Products Division
- Industrial Engraving, LLC
- Paper Converting Machine Company - Ashland Ave
- Sanimax USA, LLC
- TOSCA, Ltd.
- U.S. Paper Mills Corp. – Sonoco
- Ultra Plating Corporation
- Valley Plating & Fabricating

The following four SIUs received the 2023 Gold Award:

- Georgia-Pacific Broadway, LLC – West Landfill
- Green Bay Packaging – Green Bay Mill Division
- JBS Green Bay, Inc.
- ProActive Solutions USA, LLC

The following five SIUs received the 2023 Silver Award:

- Ahlstrom NA Specialty Solutions, LLC
- American Metal Finishing, Inc.
- Green Bay Dressed Beef, LLC – East River
- Green Bay Nonwovens, Inc. – Plant 2
- Krueger International

Recognition is given in various ways, including: a paper certificate; publication of the list of recipients in: the Green Bay Press Gazette, the NEW Water website, the external quarterly newsletter; and a social media banner. Below is an example of the social media banner for a platinum award recipient.



NEW Water staff would like to congratulate the recipients of the 2023 Industrial Achievement Awards. Consistent compliance with the NEW Water Pretreatment Program ensures the protection of the local waterways and the environment.

Recommendation

This Commission item is informational only.

Commission Action

No Commission action required.

Memorandum

TO: Commission
Tom Sigmund

FROM: Sharon Thieszen

DATE: March 13, 2024

SUBJECT: PFAS Monitoring Update

Background

As part of our ongoing pollution prevention efforts and as included in NEW Water's PFAS Plan of Action, NEW Water voluntarily began sampling for PFAS at its two treatment facilities in the spring of 2023. NEW Water is not currently subject to PFAS surface water criteria or monitoring requirements, but will be in the future. After a Quality Assurance Review, an annual data summary has been compiled and is attached. This summary will be posted to our website in the near future. The 2023 data offers a baseline to help inform future monitoring needs and pollution prevention strategies.

NEW Water will continue to sample at its two treatment facilities quarterly in 2024. Starting in spring 2024, NEW Water plans to expand its PFAS monitoring into the collection system to identify possible sources of PFAS.

A presentation is attached which includes the 2023 monitoring summary and highlights the 2024 monitoring goals. To learn more about PFAS, visit our website at: <https://www.newwater.us/pfas>

Recommendation

This Commission item is informational only.

Commission Action

No Commission action required.



PFAS Monitoring

2023 Results

&

2024 Plan

Sharon Thieszen
Field Services Manager



What are PFAS?

PFAS, or per- and polyfluoroalkyl substances, are a group of human-made compounds that don't break down easily in nature. They're ubiquitous, present in a variety of products, including cookware, firefighting foam, and stain-resistant clothing. They have been linked to low birth weight, cancer, and liver disease, and have been shown to reduce vaccines' effectiveness.



Industrial, commercial, and domestic wastewater may contain PFAS, ranging from trace to higher concentrations. Wastewater treatment plants, such as NEW Water, were not traditionally designed to remove PFAS from wastewater.



Regulatory Status

- Currently, PFAS sampling is voluntary for NEW Water.
- EPA is designing a POTW Influent Study, which would likely require POTWs, including NEW Water, to collect limited PFAS samples from influent, effluent, biosolids, and industries.
- NEW Water's future WPDES permit will require sampling, which will inform the need for a Pollution Minimization Plan and permit limits.
- In August 2022, surface water standards for PFOA and PFOS went into effect in Wisconsin.



2023 Monitoring Plan

- Sample locations: GBF and DPF untreated and treated
- Sample frequency: quarterly
- Goals
 - Baseline data to inform future monitoring plan and pollution prevention strategies

2023 Green Bay Facility Results

Green Bay Facility	2023 Average Untreated	2023 Average Treated	WDNR Surface Water Criteria* <i>Public Water Supply</i>	WDNR Surface Water Criteria* <i>Other Surface Water</i>
PFOA (ppt)	11	12	20	95
PFOS (ppt)	16	11	8	8

Notes:

Results in parts per trillion (ppt)

Q2 sample omitted due to Quality Assurance/Quality Control

Environmental Protection Agency (EPA) Method 537 (modified) was utilized

**NEW Water is not currently subject to PFAS surface water criteria*



2023 De Pere Facility Results

De Pere Facility	2023 Average Untreated	2023 Average Treated	WDNR Surface Water Criteria* <i>Public Water Supply</i>	WDNR Surface Water Criteria* <i>Other Surface Water</i>
PFOA (ppt)	6.7	11	20	95
PFOS (ppt)	20	8.6	8	8

Notes:

Results in parts per trillion (ppt)


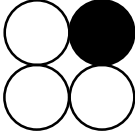
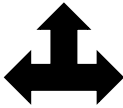
Q2 sample omitted due to Quality Assurance/Quality Control

Environmental Protection Agency (EPA) Method 537 (modified) was utilized

**NEW Water is not currently subject to PFAS surface water criteria*



2024 Monitoring Goals/Purpose

-  Identify sources of PFAS in NEW Water's service area
-  Distinguish which PFAS compounds are present at the sources and quantify amounts
-  Use sampling data to guide NEW Water's PFAS pollution prevention strategy





2024 Monitoring Plan

- Residential / commercial background location(s)
- Major service area contribution locations
- Industries that are known or suspected PFAS sources based on:
 - NEW Water survey results
 - General industry knowledge
 - EPA and WDNR guidance

Sampling frequency: 2X or 4X per year, depending on location.



Next Steps

- Share 2023 results summary on NEW Water's website
- Execute 2024 monitoring plan
- Continue to partner with industries on pollution prevention strategies
- Continue to monitor and participate in regulatory and legislative efforts
- Communicate updates and information with NEW Water's partners and audiences

Questions?

For more information about NEW Water's PFAS Plan of Action, check out our website: [PFAS \(newwater.us\)](https://newwater.us)

Protecting our most valuable resource, water



NEW Water PFAS Sample Collection Summary (Green Bay and De Pere Treatment Facilities)

As part of our ongoing pollution prevention efforts, NEW Water voluntarily began sampling at its two treatment facilities in the spring of 2023. NEW Water is not currently subject to PFAS surface water criteria or monitoring requirements. After a Quality Assurance Review, an annual data summary has been compiled.

NEW Water conducted quarterly monitoring at locations representative of our incoming untreated wastewater and our outgoing treated wastewater at the Green Bay Facility and the De Pere Facility.

The 2023 data offer a baseline to help inform future monitoring needs and pollution prevention strategies.

The 2023 data summary is as follows:

Green Bay Facility	2023 Average Untreated	2023 Average Treated	WDNR Surface Water Criteria* <i>Public Water Supply</i>	WDNR Surface Water Criteria* <i>Other Surface Water</i>
PFOA (ppt)	11	12	20	95
PFOS (ppt)	16	11	8	8

De Pere Facility	2023 Average Untreated	2023 Average Treated	WDNR Surface Water Criteria* <i>Public Water Supply</i>	WDNR Surface Water Criteria* <i>Other Surface Water</i>
PFOA (ppt)	6.7	11	20	95
PFOS (ppt)	20	8.6	8	8

Notes:

Results in parts per trillion (ppt)

Q2 sample omitted due to Quality Assurance/Quality Control

Environmental Protection Agency (EPA) Method 537 (modified) was utilized

**NEW Water is not currently subject to PFAS surface water criteria*

Memorandum

TO: Commission
Tom Sigmund

FROM: Emily Tietyen

DATE: March 27, 2024

SUBJECT: Executive Director Recruitment

Background

Planning for the recruitment of the next Executive Director is underway, this memo is to provide a brief update on the process.

The Human Resources Manager will provide the Commission with draft materials to highlight the role for their feedback. Next steps include the finalization of these materials, job posting language and job posting sources.

Commission Action

No action requested.



Memorandum

TO: Commission
Tom Sigmund

FROM: Courtney Mueller

DATE: March 18, 2024

SUBJECT: 2024 January and February Financial Statements

Please find attached the Financial Statements for your review.

Operating Revenues

- January's operating revenues were unfavorable to budget by (\$18K) or (0.44%) from the following:
 - Mill revenue is below budget.
- February's operating revenues were unfavorable to budget by (\$9K) or (0.24%) from the following:
 - Mill revenue is below budget.
- Year to date, total operating revenues were unfavorable to budget by (\$27K) or (0.34%) from the following:
 - Mill revenue is below budget.

Operating Expenses

- January's operating expenses were favorable to budget by \$33K or 1% from less expenditures than budgeted in Maintenance interceptors and Contracted Services.
- February's operating expenses were favorable to budget by \$249K or 12% from less expenditures than budgeted in contracted services and solid waste disposal.
- Year to date, total operating expenses were favorable to budget by \$282K or 6% from less expenditures than budgeted in contracted services.

Net Income (Loss) (Operating Income adjusted by Non-Operating Revenue and Expenses)

- Net Income for the month of January was \$653K.
- Net Income for the month of February was \$716K.
- Net Income year to date was \$1.4M

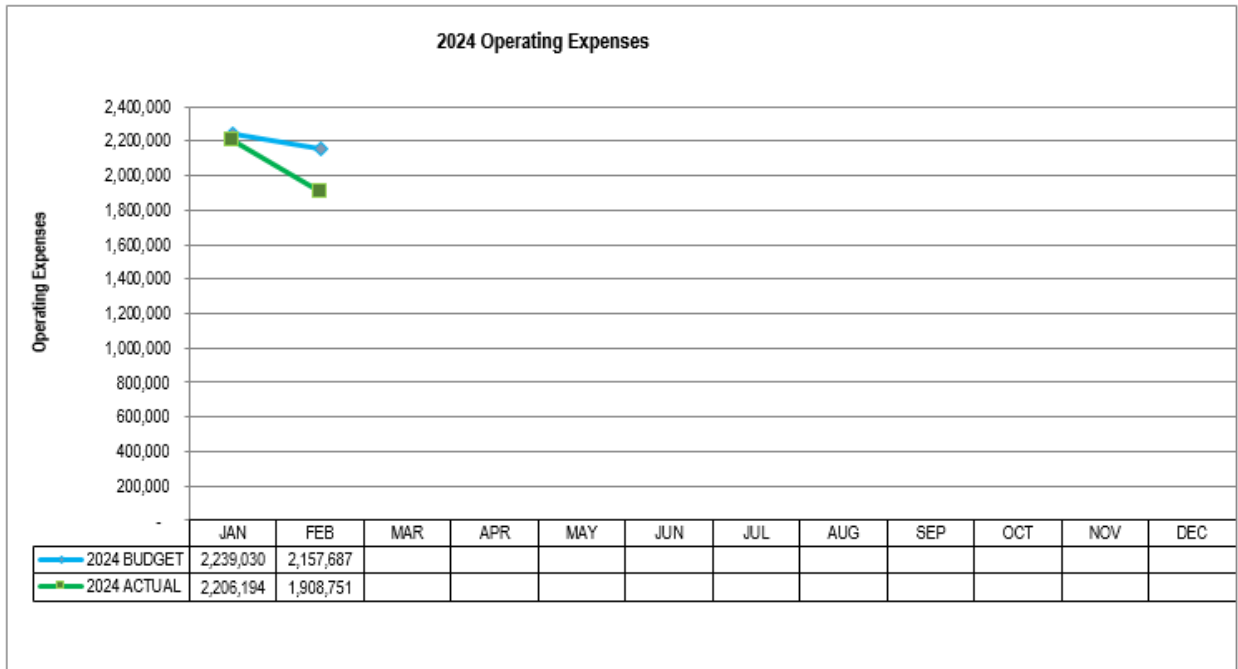
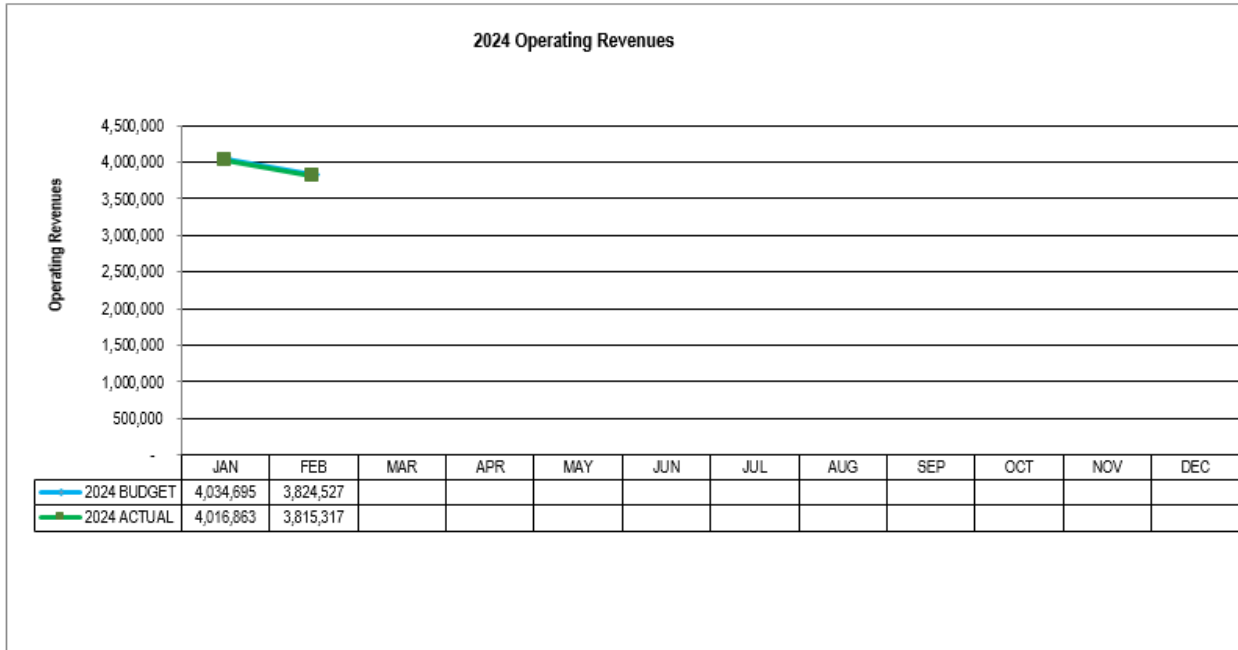


Reporting and Information

Following are the Operating Revenues and Expenses graphs; Income Statement, Statements of Net Position, and Legends are attached.

No Commission action is required.

NEW Water



NEW Water
Green Bay Metropolitan Sewerage District
INCOME STATEMENT

	Jan-24			Feb-24			Year to Date			Actual 2023
	Budget 2024	Actual 2024	Budget vs. Actual Favorable/ (Unfavorable)	Budget 2024	Actual 2024	Budget vs. Actual Favorable/ (Unfavorable)	Budget 2024	Actual 2024	Budget vs. Actual Favorable/ (Unfavorable)	
Operating Revenues										
User Fees - Municipal Waste	\$ 3,587,633	\$ 3,605,185	\$ 17,552	\$ 3,484,845	\$ 3,526,251	\$ 41,406	\$ 7,072,479	7,131,437	\$ 58,958	\$6,939,787
User Fees - Mill Waste	259,838	240,403	(19,435)	242,219	199,616	(42,603)	\$ 502,057	\$ 440,019	(62,038)	618,896
Other Revenues	187,223	171,275	(15,949)	97,463	89,450	(8,013)	\$ 284,687	\$ 260,725	(23,962)	\$239,939
Total Operating Revenues	\$ 4,034,695	\$ 4,016,863	\$ (17,832) -0.44%	\$ 3,824,527	\$ 3,815,317	\$ (9,210) -0.24%	\$ 7,859,222	\$ 7,832,180	\$ (27,042) -0.34%	\$ 7,798,622
Operating Expenses										
Salaries	\$ 838,153	\$ 834,616	\$ 3,537	\$ 781,599	\$ 735,243	\$ 46,356	\$ 1,619,752	\$ 1,569,859	\$ 49,893	\$ 1,497,301
Benefits	264,684	258,816	5,868	259,910	251,931	7,979	\$ 524,594	\$ 510,748	13,846	473,826
Employee Development	25,008	10,744	14,264	15,649	26,453	(10,804)	\$ 40,657	\$ 37,197	3,460	21,087
Travel and Meetings	3,755	5,389	(1,634)	8,325	6,948	1,377	\$ 12,080	\$ 12,337	(257)	13,040
Power	187,575	183,428	4,148	186,821	171,286	15,536	\$ 374,397	\$ 354,713	19,683	459,730
Natural Gas & Fuel Oil	74,051	100,180	(26,129)	72,378	73,412	(1,034)	\$ 146,430	\$ 173,592	(27,162)	145,429
Chemicals	127,516	96,472	31,044	69,399	148,236	(78,837)	\$ 196,914	\$ 244,708	(47,794)	226,586
Maintenance - Plant	183,319	185,448	(2,129)	196,598	176,810	19,788	\$ 379,917	\$ 362,259	17,659	206,956
Maintenance - Interceptors	46,453	3,472	42,980	23,718	8,224	15,493	\$ 70,170	\$ 11,697	58,474	19,742
Contracted Services	318,742	289,255	29,488	259,257	122,904	136,353	\$ 578,000	\$ 412,159	165,841	294,595
Insurance	45,087	44,686	401	45,087	44,686	401	\$ 90,174	\$ 89,372	802	77,798
Solid Waste Disposal	5,414	30,722	(25,308)	74,878	3,958	70,920	\$ 80,292	\$ 34,679	45,613	9,402
Administrative and Information Technology	70,796	73,657	(2,862)	120,222	106,381	13,841	\$ 191,017	\$ 180,038	10,979	94,417
Supplementary Expenses (See Legend)	48,478	89,308	(40,831)	43,846	32,280	11,566	\$ 92,324	\$ 121,589	(29,265)	73,247
Total Operating Expenses	\$ 2,239,030	\$ 2,206,194	\$ 32,836 1%	\$ 2,157,687	\$ 1,908,751	\$ 248,936 12%	\$ 4,396,717	\$ 4,114,945	\$ 281,772 6%	\$ 3,613,157
Operating Income	\$ 1,795,664	\$ 1,810,669	\$ 15,005 1%	\$ 1,666,840	\$ 1,906,566	\$ 239,726 14%	\$ 3,462,505	\$ 3,717,235	\$ 254,730 7%	\$ 4,185,465
Non-Operating Revenues and Expenses										
Investment Income	\$ 121,348	\$ 294,586	\$ 173,238	\$ 121,348	\$ 247,311	\$ 125,963	\$ 242,697	\$ 541,897	\$ 299,200	\$ 386,416
Unrealized Gain/Loss on Investment	\$ -	\$ -	\$ -	\$ -	\$ -	\$ -	\$ -	\$ -	\$ -	\$ -
Amortization of Premium	\$ -	\$ -	\$ -	\$ -	\$ -	\$ -	\$ -	\$ -	\$ -	\$ -
Depreciation	\$ (1,160,294)	\$ (1,160,294)	\$ -	\$ (1,160,294)	\$ (1,160,294)	\$ -	\$ (2,320,588)	\$ (2,320,588)	\$ -	(2,320,856)
Gain (Loss) on Disposal of Fixed Assets	0	0	\$ -	0	15,000	\$ 15,000	\$ -	\$ 15,000	\$ 15,000	-
Interest Expense	\$ (292,369)	\$ (292,369)	\$ -	\$ (292,369)	\$ (292,725)	\$ (355)	\$ (584,739)	\$ (585,094)	\$ (355)	(621,556)
Misc Non-Operating Expenses	0	0	\$ -	0	0	\$ -	\$ -	\$ -	\$ -	-
Total Non-Operating Revenues and Expenses	\$ (1,331,315)	\$ (1,158,077)	\$ 173,238	\$ (1,331,315)	\$ (1,190,708)	\$ 140,607	\$ (2,662,630)	\$ (2,348,785)	\$ 313,845	\$ (2,555,996)
Net Income (Loss)	\$ 464,349	\$ 652,592	\$ 188,242	\$ 335,525	\$ 715,858	\$ 380,333	\$ 799,875	\$ 1,368,450	\$ 568,575	\$ 1,629,469

Note: Please reference attached legends by categories.

NEW Water

Green Bay Metropolitan Sewerage District

Income Statement Legends per Categories

Operating Revenues:

User Fees - Municipal Waste:	Volume, Biochemical Oxygen Demand, Suspended Solids, Phosphorus, Kjeldahl Nitrogen, Direct Charges
User Fees – Mill Waste:	Volume, Biochemical Oxygen Demand, Suspended Solids, Phosphorus, Kjeldahl Nitrogen Direct Charges from Procter & Gamble, and Fox River Fiber
Capital and Direct Revenue Mills:	Capital and Debt Service Charges.
Other Revenues:	Excess Capacity Rental and Exceedance Surcharges, Discounts Permit Fees, Leases and miscellaneous revenues.

Operating Expenses:

Salaries:	Departmental, Pretreatment, Interceptor, Meter and Lift Stations (East River Lift Stations and Old Plank Lift Stations).
Benefits:	Health, Dental, & Life Insurances, Retirement, Social Security, Fringe and Compensated Benefits, Workers and Unemployment Compensations, Uniforms, Employee Referral Services, Long Term Disability, and Wellness.
Employee Development:	Registration, Conference, Seminar, Tuition Fees and Training.
Travel and Meetings:	Lodging, Transportation, Meals, Mileage, and Meetings (prior were included in Employee Development and Supplementary Expenses).
Power:	All Power related.
Natural Gas & Fuel Oil:	Generators, Incineration and Heating.
Chemicals:	Sodium, Polymer, Ferric Chloride, Muriatic Acid, Lime, etc., Interceptor Odor Control and Lab Chemicals.
Maintenance Plant:	Repair and Maintenance Building and Equipments, Inventories (Obsolescence, Variances), Telephones for Lift and Meter Stations, Pretreatment Programs, Inventory Obsolescence, Leases and Rental.

NEW Water

Green Bay Metropolitan Sewerage District

Income Statement Legends per Categories

Operating Expenses (Continued):

Maintenance Interceptors:	Repair and Maintenance of Interceptors, Lift Stations, and Meter Stations.
Contracted Services:	Contractors, Legal, Audit, Studies, Occupational Health, Custodial Services, Environmental Programs, Sponsorship, Hazardous Waste Disposal, Class and Compensation, Household Hazardous Waste Disposal, DNR Environmental Fees, In District Sustainability, Risk Based Asset Management, Watershed Based Planning, Reg/Muni Environment Service and Contingency.
Insurances:	Automobile, Property, Boiler and Machinery, Liability, Umbrella, Commercial Crime, and Public Officials.
Solid Waste Disposal:	Hickory Meadows Landfill and Veolia Environmental Services.
Administrative & Information Technology:	Supplies, Postage, Data Processing (computer software, main application, support, etc.), Publishing, Sales and Use Tax, Bank Service Charges and Employee Recognition.
Supplementary Expenses:	Telephones (main lines, cells), Fuel Vehicles, (New) Fuel Equipment, Small Tools, Public Information, Memberships and Dues, Publications and Subscriptions, Licenses & Permits, Freight In, Freight Out, Safety Shoes and Glasses, and Water (including Fire Protection supplemental fee).

Non-Operating Revenues and Expenses:

Investment Income:	Interest on Investments and Interceptor Cost Recovery Interest.
Depreciation Expense:	Monthly Depreciation on all Fixed Assets such as Land, Land Improvements, Buildings, Vehicle, Boats & Trailers, Machinery Equipment, Furniture and Fixtures, Interceptors, Meters & Lift Stations.
Gain (Loss) on Disposal of Fixed Assets:	Sale, Disposal, and Transfer of Fixed Asset. Interest
Expense:	Debt Service and Bond Anticipation Note Interest.

NEW Water
GREEN BAY METROPOLITAN SEWERAGE DISTRICT
STATEMENTS OF NET POSITION
For the Twelve Months Ending:

Assets	31-Jan-24	29-Feb-24
Current Assets		
Cash and Investments	\$ 23,048,257.36	\$ 21,353,860.61
Receivables		
Sewage Treatment Service	6,578,653.72	7,470,989.99
Accrued Interest	284,647.76	346,766.06
Other	437,919.97	372,926.74
Inventories	2,329,615.96	2,388,109.52
Prepaid Expenses	606,612.24	551,714.44
Total Current Assets	<u>\$ 33,285,707.01</u>	<u>\$ 32,484,367.36</u>
Restricted Assets		
Cash and Investments	\$ 82,399,110.58	\$ 82,563,592.53
Accrued Interest Receivables	1,125,944.19	1,125,944.19
Interceptor Cost Recovery Receivable	1,470,463.25	1,470,463.25
Total Restricted Assets	<u>\$ 84,995,518.02</u>	<u>\$ 85,159,999.97</u>
Deferred Outflows of Resources		
Deferred Pension Resources	\$ 7,845,239.00	\$ 7,845,239.00
Deferred Life Insurance Resources	\$ 1,030,883.00	\$ 1,030,883.00
Deferred Loss on Bond Advance Refunding	\$ 2,133,931.57	\$ 2,133,931.57
Total Deferred outflows of Resources	<u>\$ 11,010,053.57</u>	<u>\$ 11,010,053.57</u>
Capital Assets		
Wastewater Treatment Facilities	\$ 364,325,927.93	\$ 364,325,927.93
Interceptor Sewers	111,877,194.31	111,877,194.31
Construction in Progress	19,051,250.05	22,065,405.01
Total Capital Assets	<u>\$ 495,254,372.29</u>	<u>\$ 498,268,527.25</u>
Less: Accum Depreciation and Amortization	<u>(179,192,262.72)</u>	<u>(180,352,556.72)</u>
Net Capital Assets	<u>\$ 316,062,109.57</u>	<u>\$ 317,915,970.53</u>
Other Assets		
Bond Issuance Costs	\$ -	\$ -
Net Pension Asset	\$ 4,035,763.00	\$ 4,035,763.00
Total Other Assets	<u>\$ 4,035,763.00</u>	<u>\$ 4,035,763.00</u>
Total Assets	<u>\$ 449,389,151.17</u>	<u>\$ 450,606,154.43</u>
Liabilities and Equity		
Current Liabilities		
Accounts Payable	\$ 4,551,978.21	\$ 4,417,682.63
Salaries Payable	279,276.60	305,590.05
Other Accrued Liabilities	140,379.11	134,522.02
Total Current Liabilities	<u>\$ 4,971,633.92</u>	<u>\$ 4,857,794.70</u>
Liabilities Payable from Restricted Assets		
Accounts Payable	\$ 465,992.90	\$ 492,795.58
Current Maturities of General Long-Term Debt	12,313,095.00	12,313,095.00
Interest Accrued	870,305.77	1,163,030.49
Total Liabilities Payable from Restricted Assets	<u>\$ 13,649,393.67</u>	<u>\$ 13,968,921.07</u>
Long-Term Liabilities		
General Long-Term Debt, Less Current Maturities	\$ 156,414,950.18	\$ 156,709,494.91
Debt Premium	\$ 326,357.03	\$ 326,357.03
Bond Premium	\$ -	\$ -
Pension Liability	-	-
Compensated Absences	\$ 2,409,808.87	\$ 2,410,720.75
Other post employment benefits (life insurance)	\$ 2,492,905.00	\$ 2,492,905.00
Deferred Revenue	-	-
Total Long-Term Liabilities	<u>\$ 161,644,021.08</u>	<u>\$ 161,939,477.69</u>
Total Liabilities	<u>\$ 180,265,048.67</u>	<u>\$ 180,766,193.46</u>
Deferred Inflows of Resources		
Deferred Pension Obligations	\$ 9,508,570.00	\$ 9,508,570.00
Deferred Life Insurance Obligations	\$ 269,538.00	\$ 269,538.00
Total Deferred Inflows of Resources	<u>\$ 9,778,108.00</u>	<u>\$ 9,778,108.00</u>
Net Position		
Net Position		
Invested in Capital Assets, net of Related Debt	\$ 149,141,638.93	\$ 150,700,955.16
Restricted for Equipment & Interceptor Replacement	30,288,166.31	30,438,765.45
Restricted for Plant Capital Replacement	32,155,562.53	32,213,989.50
Restricted for Debt Retirement	21,391,521.81	21,115,589.98
Restricted for Capital Projects	-	-
Restricted for Pension	4,035,763.00	4,035,763.00
Unrestricted	22,333,341.92	21,556,789.88
Total Net Position	<u>\$ 259,345,994.50</u>	<u>\$ 260,061,852.97</u>

Note: Please reference attached legends by categories.

NEW Water

Green Bay Metropolitan Sewerage District

Statements of Net Position (previously Balance Sheet) Legends per Categories

Assets

<u>Current Assets:</u>	Are cash and other assets that will be converted to cash or used by GBMSD in a relative short period of time, usually a year or less.
Cash and Investments:	Petty cash, cash in checking, general savings and investment accounts, discounts/premiums for unrestricted and restricted.
Accounts Receivables:	All amounts owed to GBMSD by customers.
Sewage Treatment Service:	Accounts receivable for sewage treatment services.
Accrued Interest:	Accrued interest and interest received on investments.
	Other: Accounts receivable from septage, pretreatment, and other customers such as Procter and Gamble Paper Products, West Shore Pipeline Co, etc.
Inventories:	Are goods and materials held available in stock by GBMSD such as electrical, instrumentation, mechanical, hardware, janitorial, lubes & oils, fuel oils, polymer, and all other miscellaneous related products such as copy paper, gloves, respirator or filter head piece, cartridge, cleaners, towels, etc.
Prepaid Expenses:	Insurances that have been paid for and not yet used such as worker compensation, liability base, automotive, umbrella base, property base, boiler & machinery, commercial crime, public officials, health, dental, and fringe benefits.
<u>Restricted Assets</u>	
Cash and Investments:	Savings, investment and money market accounts for debt, plant and equipment replacement fund (PERF), interceptor cost recovery (ICR), bond proceeds, and unrealized gain/loss.
Accrued Interest Receivable:	Accrued interest and interest received periodically on restricted investments.

NEW Water

Green Bay Metropolitan Sewerage District

Statements of Net Position (previously Balance Sheet) Legends per Categories

Interceptor Cost Recovery Receivable: Deferred receivable from municipal customers in which the municipalities have agreed to reimburse GBMSD for the cost of interceptors owned by GBMSD whose capacity has been allocated.

Capital/Fixed Assets:

Capital: Are all items of property other than inventories, receivables, copy rights, certain governmental obligations, and real and depreciable property used by GBMSD (Ex: capital stocks and bonds).

Fixed Assets: Are long term assets acquired by GBMSD rather than for resale.

Wastewater Treatment Facilities: Land & land improvements, structures, machinery & equipment, furniture & fixtures, vehicle, boats & trailers, and amortize assets.

Interceptor Sewers: Meter & lift stations and interceptors.

Construction in Progress (CIP): Asset entry records the cost of construction work, which is not yet completed. A CIP item is not depreciated until the asset is placed in service.

Accumulated Depreciation & Amortization: Shows the total of all depreciation and amortization recorded on the asset up through the balance sheet date (land & land improvements, structures, machinery & equipment, furniture & fixtures, vehicle, boats & trailers, and accumulated amortization).

Depreciation: Is the amount of plant asset cost allocated to each accounting period benefiting from the asset's use; it is a process of allocation, not valuation.

Amortization: Is the systematic write-off of the cost of an intangible asset to expense. A portion of intangible asset cost is allocated to each accounting period in the economic (useful) life of the asset.

NEW Water

Green Bay Metropolitan Sewerage District

Statements of Net Position (previously Balance Sheet) Legends per Categories

Other Assets:

Other Receivable: Miscellaneous receivable such as credits and adjustments received.

Bond Issuance Cost: Expenditures incurred in preparing and selling a bond issue such as legal, underwriting, registration fees, etc. These deferred charges are amortized over the period the bonds are outstanding (date of issue to the maturity date).

Liabilities and Equity

Current Liabilities: Are debts, usually due within one year, and the payment of which normally will require the use of current assets.

Accounts Payable: Are amounts owed by GBMSD to creditors for items or services purchased from them. Contains all vouchers that have been prepared and approved as proper liabilities such as accounts payable, retainage payable for projects and accounts payable accruals.

Salaries Payable: Accrued salaries incurred and not yet paid.

Other Accrued Liabilities: Amounts owed to employees for services rendered and for which payment has not been made at the balance sheet date such as fringe benefits payable, federal income tax payable, FICA payable, Medicare payable, life insurance, dependent care withholding, child support payment, United Way payable, and Wisconsin income tax payable.

Liabilities Payable for Restrictive Assets:

Accounts Payable: Contains all vouchers that have been prepared and approved as proper liabilities for restrictive assets.

Current Maturity of Long Term Debt:

Interest Accrued: Accrual and interest payment on debt services, Clean Water Fund loan, bond anticipation note, and Wisconsin environmental improvements.

NEW Water

Green Bay Metropolitan Sewerage District

Statements of Net Position (previously Balance Sheet) Legends per Categories

<u>Long-Term Liabilities:</u>	Are those debts not due for a relatively long period of time, usually more than one year.
General Long-Term Debt, Less Current Maturities:	Clean Water Fund loans, general obligation notes, bond issuance, bond anticipation notes, and promissory notes.
Compensated Absences:	Are compensation received by employees such as accrued vacation & sick pay, severance, and paid leave conversion. Accumulated unpaid vacation and sick paid amounts are accrued when benefits vested to employees.
Deferred Revenues:	Involves transfer of data already recorded in asset and liability accounts to expense and revenue accounts (Ex: De Pere consolidation).

Net Assets

Invested in Capital Assets, Net of Related Debt:	Capital Assets net of debt such as Clean Water Fund loans, general obligation note, bond issue, bond anticipation loan, promissory note, bond issuance costs, and discount on bond issue.
Restrictive for Equipment and Interceptor Replacement:	Plant and equipment replacement fund (PERF), interceptor cost recovery (ICR) investments, Rate Stabilization Fund and accrued interest received.
Restricted for Debt Retirement:	Restrictive debt investment, accrued interest received debt, and interest payable.
Restricted for Capital Projects:	Restrictive for capital project expenditures for the R2E2 Solids Project.
Unrestricted:	All other net assets that do not meet the definition of "restricted" or "invested in capital assets, net of related debt."

Memorandum

TO: Commission
Tom Sigmund

FROM: Patrick Wescott

DATE: March 18, 2024

SUBJECT: February 2024 Operations Report

CC: Jake Becken – Treatment
Pat Smits – Maintenance
Kate Verbeten – Environmental Compliance

Effluent Quality

Both facilities were in full compliance with all effluent limits for the month of February.

Attached are graphs showing a rolling 12-month average for effluent quality and permit limits for both facilities.

Air Quality

The Green Bay Facility was in compliance with air quality limits for the month of February.

Resource Recovery

For the month of February, the solids processing facility generated 1,359 MWH of electricity. Total bio-gas volume recovered was 161,946 CCF. This is just over 90% of the total volume produced. The remaining volume was sent through the waste gas flare. NEW Water received 486,334 gallons of high strength waste in February.

Attached is a graph showing a rolling 12-month average for energy utilization at the Green Bay Facility.

Attachments

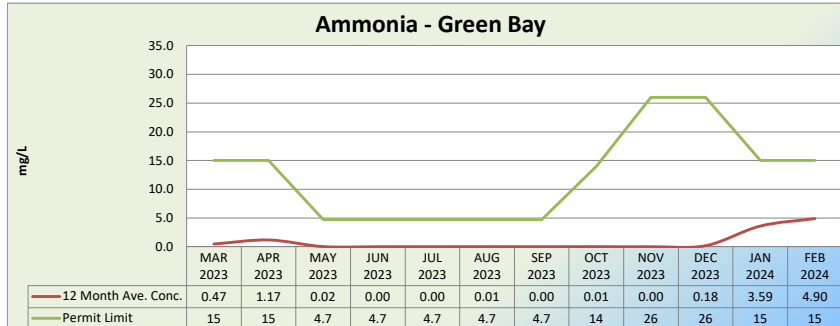
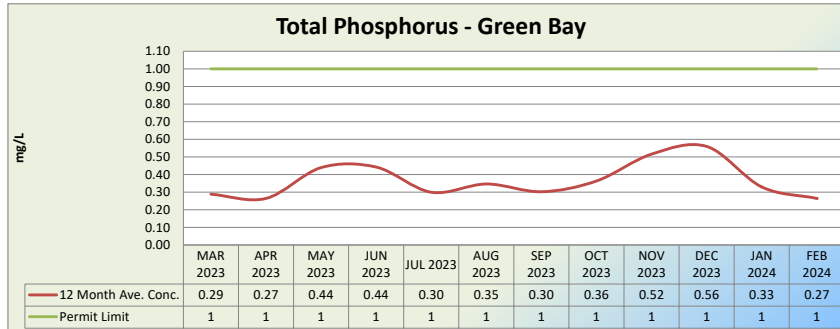
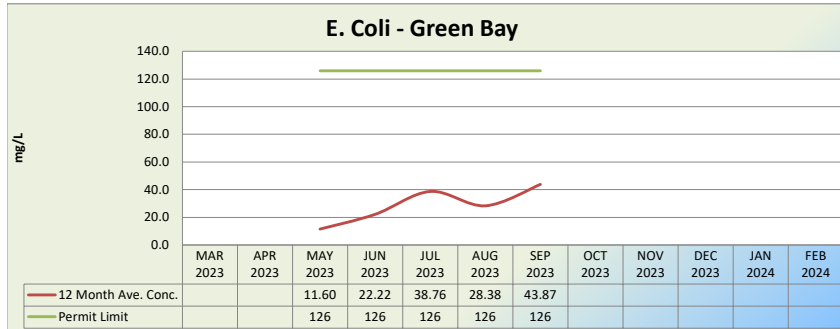
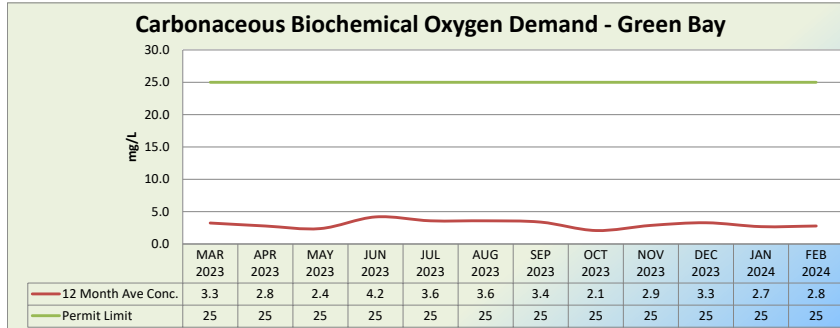
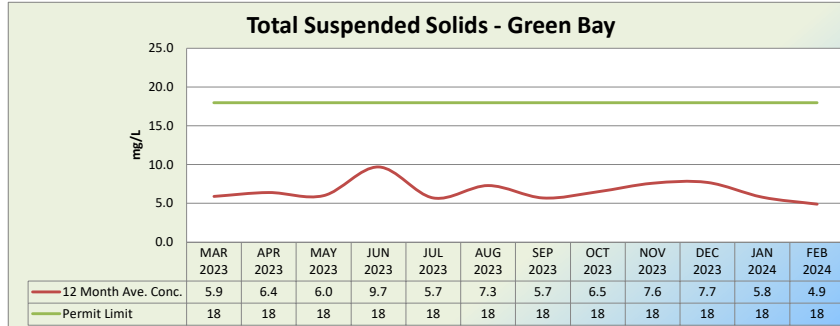
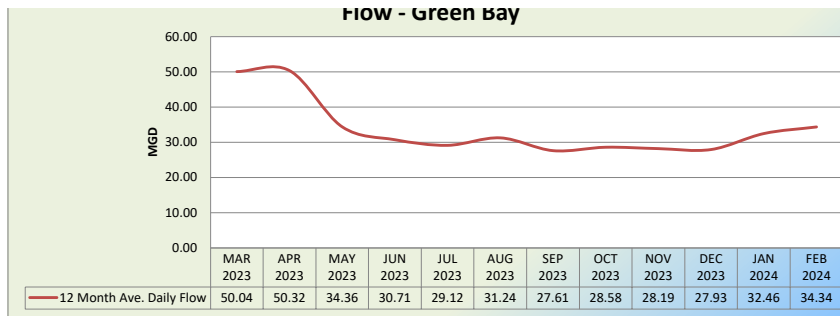


EFFLUENT QUALITY - CURRENT YEAR 2024 NEW Water (GBMSD) - GREEN BAY FACILITY													May - October Avg = 0.6 mg/L November - April Avg = 0.6 mg/L				Ammonia Limits Jan-Apr. Monthly Avg = 15 mg/L Weekly Avg = 59 mg/L May-Sept Monthly Avg = 4.7 mg/L Weekly Avg =13 mg/L October Monthly Avg =14 mg/L Weekly Avg = 38 mg/L Nov-Dec Monthly Avg. = 26 mg/L Weekly Avg =104 mg/L						
Permit Limits:			18 mg/L		N/A			25 mg/L		126#/ 100 ml		> 410#/100 ml 10%		1.0 mg/L 0.6 mg/L per Six Months									
	FLOW		TSS			T-BOD			C-BOD			E. Coli		T. PHOSPHORUS				AMMONIA			TKN		
MONTH	Million Gallons	MGD	Ave mg/L	Ave #/Day	Total #/Month	Ave mg/L	Ave #/Day	Total #/Month	Ave mg/L	Ave #/Day	Total #/Month	Monthly Geo Mean	% Exceedance	Ave mg/L	Ave #/Day	Ave mg/l 6 Months	Total #/Month	Ave mg/L	Ave #/Day	Total #/Month	Ave mg/L	Ave #/Day	Total #/Month
JAN	1,006.230	32.46	5.8	1,569	48,645	12.3	3,349	103,832	2.7	766	23,761			0.33	89		2,753	3.59	1,000	30,992	5.09	1,403	43,482
FEB	995.762	34.34	4.9	1,402	40,666	13.6	3,923	113,772	2.8	806	23,376			0.27	75		2,165	4.90	1,453	42,148	6.26	1,842	53,431
MAR																0.42							
APR																							
MAY																							
JUN																							
JUL																							
AUG																							
SEP																							
OCT																							
NOV																							
DEC																							
Average	1,000.996	33.40	5.4	1,486	44,656	13.0	3,636	108,802	2.8	786	23,568			0.30	82		2,459	4.25	1,226	36,570	5.68	1,623	48,456
Total	2,001.992				89,311			217,603			47,137						4,918			73,140			96,913
All time record best(s) ->			2.0	425	13,187	2.0	336	10,267	0.2	52	1,556			0.11	27		803	0.00	0	0	0.67	170	5,125

The effluent quality was in compliance with all of the above permit parameters for February 2024

EFFLUENT QUALITY - CURRENT YEAR 2023 NEW Water (GBMSD) - GREEN BAY FACILITY													May - October Avg = 0.6 mg/L November - April Avg = 0.6 mg/L				Ammonia Limits Jan-Apr. Monthly Avg = 15 mg/L Weekly Avg = 59 mg/L May-Sept Monthly Avg = 4.7 mg/L Weekly Avg =13 mg/L October Monthly Avg =14 mg/L Weekly Avg = 38 mg/L Nov-Dec Monthly Avg. = 26 mg/L Weekly Avg =104 mg/L						
Permit Limits:			18 mg/L		N/A			25 mg/L		126#/ 100 ml		> 410#/100 ml 10%		1.0 mg/L 0.6 mg/L per Six Months									
	FLOW		TSS			T-BOD			C-BOD			E. Coli		T. PHOSPHORUS				AMMONIA			TKN		
MONTH	Million Gallons	MGD	Ave mg/L	Ave #/Day	Total #/Month	Ave mg/L	Ave #/Day	Total #/Month	Ave mg/L	Ave #/Day	Total #/Month	Monthly Geo Mean	% Exceedance	Ave mg/L	Ave #/Day	Ave mg/l 6 Months	Total #/Month	Ave mg/L	Ave #/Day	Total #/Month	Ave mg/L	Ave #/Day	Total #/Month
JAN	1,077.505	34.76	7.4	2,152	66,709	10.9	3,153	97,730	3.5	1,025	31,763			0.38	111		3,453	0.00	0	0	2.10	609	18,894
FEB	923.380	32.98	7.7	2,120	59,371	10.5	2,903	81,271	4.2	1,152	32,247			0.37	103		2,887	0.14	40	1,130	2.19	604	16,907
MAR	1,551.325	50.04	5.9	2,481	76,915	10.0	4,191	129,911	3.3	1,376	42,662			0.29	121		3,741	0.47	235	7,046	2.16	927	28,740
APR	1,509.668	50.32	6.4	2,754	82,611	11.9	4,842	145,257	2.8	1,184	35,535			0.27	105	0.32	3,160	1.17	521	15,629	2.72	1,168	35,052
MAY	1,065.020	34.36	6.0	1,784	55,293	7.3	2,128	65,958	2.4	744	23,074	11.60	0.00	0.44	130		4,017	0.02	6	187	1.52	438	13,566
JUN	921.360	30.71	9.7	2,581	77,424	9.8	2,587	77,604	4.2	1,104	33,108	22.22	0.00	0.44	117		3,520	0.00	0	0	1.86	483	14,493
JUL	902.790	29.12	5.7	1,385	42,936	6.2	1,492	46,259	3.6	872	27,038	38.76	0.00	0.30	74		2,309	0.00	0	0	1.97	480	14,869
AUG	968.531	31.24	7.3	1,916	59,405	6.0	1,570	48,680	3.6	921	28,552	28.38	0.00	0.35	90		2,804	0.01	2	67	1.82	475	14,712
SEP	828.235	27.61	5.7	1,310	39,309	5.9	1,370	41,108	3.4	775	23,239	43.87	0.00	0.30	70		2,094	0.00	0	0	1.87	430	12,913
OCT	885.969	28.58	6.5	1,537	47,632	10.0	2,367	73,372	2.1	546	16,932			0.36	87	0.37	2,689	0.01	2	53	1.89	448	13,885
NOV	845.688	28.19	7.6	1,791	53,723	10.4	2,438	73,133	2.9	687	20,614			0.52	120		3,602	0.00	0	0	1.83	430	12,903
DEC	865.725	27.93	7.7	1,808	56,047	11.0	2,568	79,620	3.3	788	24,423			0.56	129		4,006	0.18	47	1,449	2.02	477	14,774
Average	1,028.766	33.82	7.0	1,968	59,781	9.2	2,634	79,992	3.3	931	28,266			0.38	105		3,190	0.17	71	2,130	2.00	581	17,642
Total	12,345.196				717,377			959,903			339,187						38,282			25,561			211,708
All time record best(s) ->			2.0	425	13,187	2.0	336	10,267	0.2	52	1,556			0.11	27		803	0.00	0	0	0.67	170	5,125

The effluent quality was in compliance with all of the above permit parameters for December 2023.

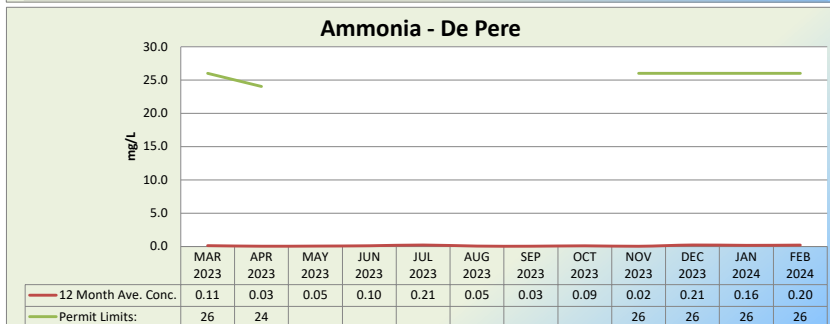
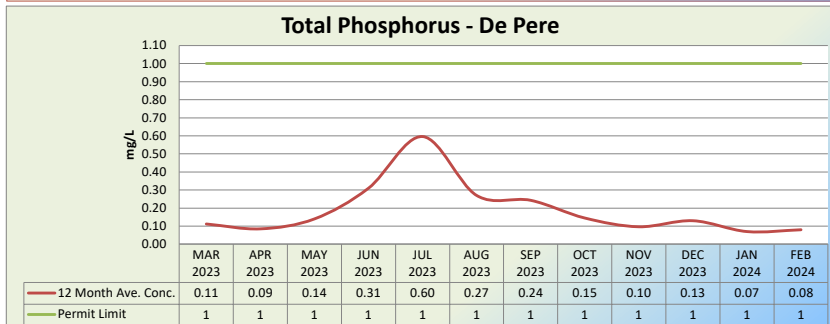
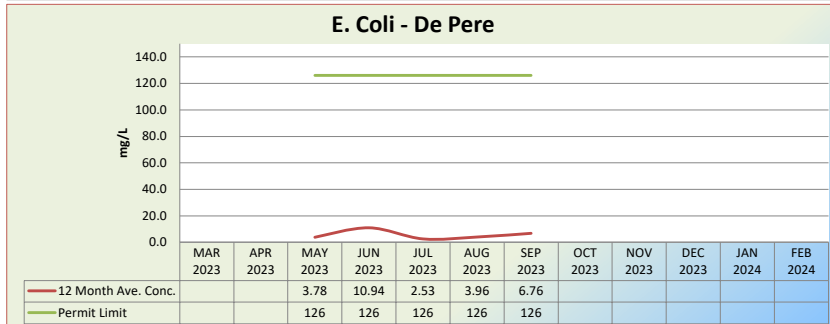
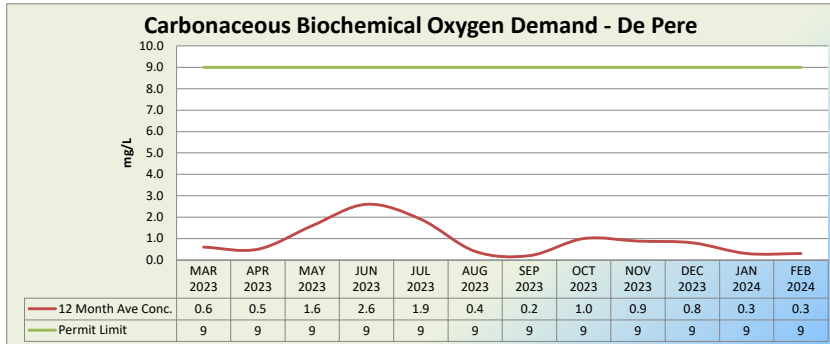
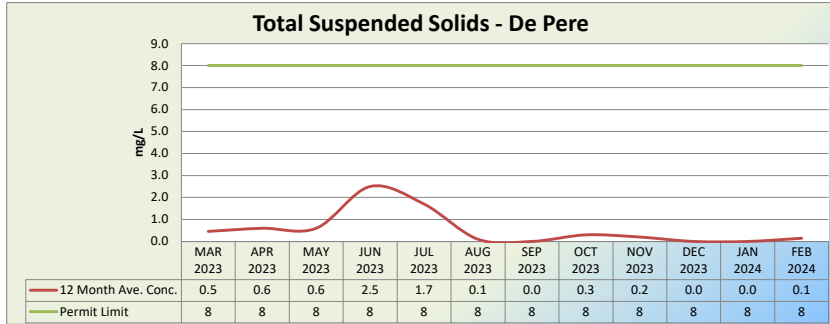
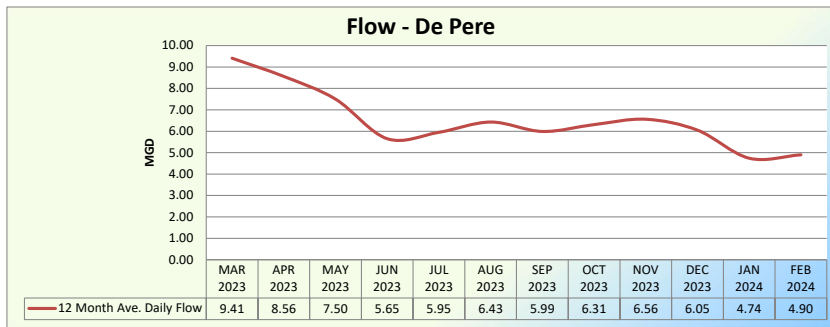


EFFLUENT QUALITY - CURRENT YEAR 2024 NEW WATER (GBMSD) - DE PERE FACILITY												May - October Avg. = 0.6 mg/L			Ammonia Limits											
												November - April Avg. = 0.6 mg/L			Jan-Mar. Monthly Avg = 26 mg/L Daily Max = 26 mg/L April Monthly Avg = 24 mg/L Daily Max = 26 mg/L May-Oct Monitor only Nov-Dec. Monthly Avg. = 26 mg/L Daily Max = 26 mg/L											
Permit Limits:												8.0 mg/L			N/A			9.0 mg/L			126# / > 410#/100 ml 10%			1.0 mg/L 0.6 mg/L per Six Months		
	FLOW		TSS			T-BOD			C-BOD			E. Coli		T. PHOSPHORUS				AMMONIA			TKN					
MONTH	Million Gallons	MGD	Ave mg/L	Ave #/Day	Total #/Month	Ave mg/L	Ave #/Day	Total #/Month	Ave mg/L	Ave #/Day	Total #/Month	Monthly Geo Mean	% Exceedance	Ave mg/L	Ave #/Day	Ave mg/l 6 Months	Total #/Month	Ave mg/L	Ave #/Day	Total #/Month	Ave mg/L	Ave #/Day	Total #/Month			
JAN	147.036	4.74	0.0	0	0	0.9	36	1,110	0.3	11	347			0.07	3		86	0.16	6	200	1.50	59	1,844			
FEB	142.159	4.90	0.1	7	194	1.6	66	1,924	0.3	14	396			0.08	3		93	0.20	8	243	1.56	64	1,845			
MAR																0.09										
APR																										
MAY																										
JUN																										
JUL																										
AUG																										
SEP																										
OCT																										
NOV																										
DEC																										
Average	144.598	4.82	0.1	4	97	1.3	51	1,517	0.3	13	372			0.07	3		90	0.18	7	222	1.53	62	1,844			
Total	289.196				194			3,034			743						179			443			3,689			
All time record best(s) ->			0.0	0	0	0.0	0	0	0.0	0	0			0.05	2		75	0.00	0	0	0.85	51	1,586			

The effluent quality was in compliance with all of the above permit parameters for February 2024

EFFLUENT QUALITY - CURRENT YEAR 2023 NEW WATER (GBMSD) - DE PERE FACILITY												May - October Avg. = 0.6 mg/L			Ammonia Limits											
												November - April Avg. = 0.6 mg/L			Jan-Mar. Monthly Avg = 26 mg/L Daily Max = 26 mg/L April Monthly Avg = 24 mg/L Daily Max = 26 mg/L May-Oct Monitor only Nov-Dec. Monthly Avg. = 26 mg/L Daily Max = 26 mg/L											
Permit Limits:												8.0 mg/L			N/A			9.0 mg/L			126# / > 410#/100 ml 10%			1.0 mg/L 0.6 mg/L per Six Months		
	FLOW		TSS			T-BOD			C-BOD			E. Coli		T. PHOSPHORUS				AMMONIA			TKN					
MONTH	Million Gallons	MGD	Ave mg/L	Ave #/Day	Total #/Month	Ave mg/L	Ave #/Day	Total #/Month	Ave mg/L	Ave #/Day	Total #/Month	Monthly Geo Mean	% Exceedance	Ave mg/L	Ave #/Day	Ave mg/l 6 Months	Total #/Month	Ave mg/L	Ave #/Day	Total #/Month	Ave mg/L	Ave #/Day	Total #/Month			
JAN	253.576	8.18	0.4	29	908	3.9	265	8,227	2.9	195	6,058			0.15	10		325	1.15	72	2,242	2.87	189	5,850			
FEB	212.857	7.60	0.1	8	219	3.6	227	6,344	1.9	121	3,387			0.14	9		256	0.92	54	1,514	2.31	142	3,977			
MAR	291.703	9.41	0.5	45	1,386	1.0	85	2,636	0.6	49	1,508			0.11	9		272	0.11	10	310	1.29	102	3,169			
APR	256.814	8.56	0.6	40	1,213	1.4	99	2,778	0.5	37	1,048			0.09	6	0.14	183	0.03	2	59	1.26	87	2,623			
MAY	232.546	7.50	0.6	38	1,185	2.5	157	4,853	1.6	99	3,079	3.78	0.00	0.14	9		283	0.05	3	92	1.56	97	3,005			
JUN	169.499	5.65	2.5	107	3,207	4.2	189	5,682	2.6	110	3,288	10.94	0.00	0.31	14		423	0.10	4	119	2.10	96	2,870			
JUL	184.282	5.95	1.7	79	2,436	3.0	143	4,433	1.9	88	2,743	2.53	0.00	0.60	28		874	0.21	9	292	2.21	107	3,316			
AUG	199.377	6.43	0.1	4	130	1.3	69	2,138	0.4	19	581	3.96	0.00	0.27	14		433	0.05	3	80	1.58	84	2,608			
SEP	179.850	5.99	0.0	0	0	1.4	72	2,159	0.2	11	317	6.76	9.10	0.24	12		365	0.03	1	40	1.56	78	2,349			
OCT	195.525	6.31	0.3	16	497	2.5	134	4,145	1.0	59	1,815			0.15	8	0.28	237	0.09	5	147	1.70	89	2,773			
NOV	196.765	6.56	0.2	10	305	2.0	108	3,227	0.9	48	1,451			0.10	5		160	0.02	1	37	1.52	83	2,496			
DEC	187.490	6.05	0.0	0	0	2.2	111	3,446	0.8	40	1,235			0.13	7		210	0.21	11	343	1.75	89	2,752			
Average	213.357	7.02	0.6	31	957	2.4	138	4,172	1.3	73	2,209			0.20	11		335	0.25	15	440	1.81	104	3,149			
Total	2,560.283				11,484			50,067			26,511						4,020			5,276			37,788			
All time record best(s) ->			0.0	0	0	0.0	0	0	0.0	0	0			0.05	2		75	0.00	0	0	0.85	51	1,586			

The effluent quality was in compliance with all of the above permit parameters for December 2023.



**R2E2 ENERGY REPORT GREEN BAY 2024
NEW Water (GBMSD) - GREEN BAY FACILITY**

	Bio-gas Generated					Electricity Used					Natural Gas Used								
	Generators			Flare		Purchased			Generated		Incineration			Heating Boiler		Thermal Oil Boiler		Co-Generation Units	
	Total (CCF)	Total (CCF)	% of Total	Total (CCF)	% of Total	Total (MWH)	Total (MWH)	% of Total	Total (MWH)	% of Total	Total (CCF)	Total (CCF)	% of Total	Total (CCF)	% of Total	Total (CCF)	% of Total	Total (CCF)	% of Total
January	160,402	159,579	99.5	823	0.5	3,248	1,882	57.9	1,366	42.1	149,709	19,681	13.1	105,256	70.3	0	0.0	24,772	16.5
February	179,377	161,946	90.3	17,431	9.7	3,117	1,758	56.4	1,359	43.6	122,088	22,363	18.3	81,328	66.6	2	0.0	18,395	15.1
March																			
April																			
May																			
June																			
July																			
August																			
September																			
October																			
November																			
December																			

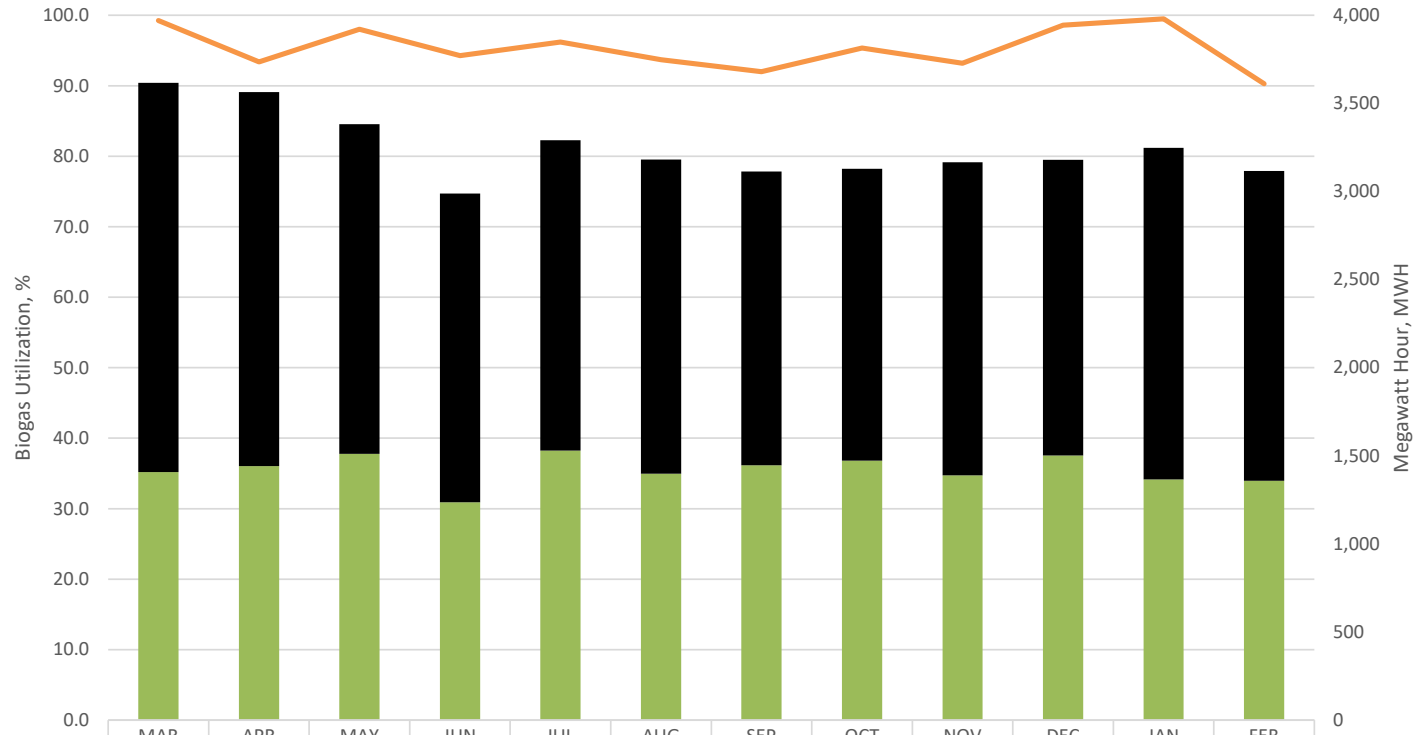
	Co-Generation Unit #3 (P-21)							Co-Generation Unit #4 (P-22)							High Strength Waste Received	Struvite Harvested
	Monthly Run Time (hours)	Total Energy Generated (MWH)	Gas Consumption				Monthly Run Time (hours)	Total Energy Generated (MWH)	Gas Consumption							
			Bio-gas		Natural Gas				Bio-gas		Natural Gas					
			Total (CCF)	Total (CCF)	% of Total	Total (CCF)			% of Total	Total (CCF)	Total (CCF)	% of Total	Total (CCF)	% of Total		
January	326	635	82,089	74,517	90.8	7,572	9.2	374	731	102,262	85,062	83.2	17,201	16.8	448,135	0
February	607	1,181	156,011	145,012	92.9	10,999	7.1	91	178	24,330	16,934	69.6	7,396	30.4	486,344	0
March																
April																
May																
June																
July																
August																
September																
October																
November																
December																

**R2E2 ENERGY REPORT GREEN BAY 2023
NEW Water (GBMSD) - GREEN BAY FACILITY**

	Bio-gas Generated					Electricity Used					Natural Gas Used								
	Generators			Flare		Purchased			Generated		Incineration			Heating Boiler		Thermal Oil Boiler		Co-Generation Units	
	Total (CCF)	Total (CCF)	% of Total	Total (CCF)	% of Total	Total (MWH)	Total (MWH)	% of Total	Total (MWH)	% of Total	Total (CCF)	Total (CCF)	% of Total	Total (CCF)	% of Total	Total (CCF)	% of Total	Total (CCF)	% of Total
January	286,570	115,744	40.4	170,826	59.6	3,606	2,910	80.7	696	19.3	158,476	21,359	13.5	134,998	85.2	110	0.1	2,009	1.3
February	196,272	196,272	100.0	0	0.0	3,150	1,839	58.4	1,311	41.6	122,254	15,619	12.8	104,269	85.3	3	0.0	2,363	1.9
March	192,933	191,463	99.2	1,470	0.8	3,616	2,209	61.1	1,407	38.9	136,204	19,956	14.7	103,308	75.8	0	0.0	12,940	9.5
April	227,004	211,956	93.4	15,048	6.6	3,564	2,122	59.5	1,442	40.5	104,832	19,943	19.0	74,607	71.2	0	0.0	10,282	9.8
May	201,638	197,609	98.0	4,030	2.0	3,381	1,870	55.3	1,511	44.7	62,985	14,207	22.6	25,242	40.1	0	0.0	23,536	37.4
June	149,792	141,222	94.3	8,570	5.7	2,989	1,752	58.6	1,237	41.4	53,227	13,796	25.9	12,353	23.2	0	0.0	27,078	50.9
July	167,491	161,103	96.2	6,388	3.8	3,291	1,762	53.5	1,529	46.5	67,313	16,250	24.1	44	0.1	0	0.0	51,019	75.8
August	228,999	214,584	93.7	14,415	6.3	3,181	1,782	56.0	1,398	44.0	24,110	6,999	29.0	234	1.0	1	0.0	16,876	70.0
September	174,080	160,130	92.0	13,950	8.0	3,113	1,667	53.5	1,446	46.5	37,124	24,823	66.9	189	0.5	0	0.0	12,113	32.6
October	201,738	192,383	95.4	9,355	4.6	3,128	1,656	52.9	1,472	47.1	64,529	11,991	18.6	42,014	65.1	375	0.6	10,149	15.7
November	186,820	174,116	93.2	12,704	6.8	3,166	1,777	56.1	1,389	43.9	105,213	24,395	23.2	65,296	62.1	0	0.0	15,522	14.8
December	190,340	187,687	98.6	2,653	1.4	3,180	1,679	52.8	1,501	47.2	123,995	13,357	10.8	86,346	69.6	117	0.1	24,175	19.5

	Co-Generation Unit #3 (P-21)							Co-Generation Unit #4 (P-22)							High Strength Waste Received	Struvite Harvested
	Monthly Run Time (hours)	Total Energy Generated (MWH)	Gas Consumption				Monthly Run Time (hours)	Total Energy Generated (MWH)	Gas Consumption							
			Bio-gas		Natural Gas				Bio-gas		Natural Gas					
			Total (CCF)	Total (CCF)	% of Total	Total (CCF)			% of Total	Total (CCF)	Total (CCF)	% of Total	Total (CCF)	% of Total		
January	20	40	5,834	5,735	98.3	99	1.7	338	656	111,919	110,009	98.3	1,910	1.7	1,235,439	0
February	446	868	123,021	121,024	98.4	1,997	1.6	227	443	75,614	75,248	99.5	366	0.5	992,088	0
March	461	897	121,375	112,965	93.1	8,410	6.9	263	510	83,028	78,498	94.5	4,530	5.5	794,641	0
April	307	584	81,747	77,308	94.6	4,439	5.4	441	858	140,491	134,648	95.8	5,843	4.2	1,001,493	0
May	97	185	24,991	22,235	89.0	2,756	11.0	687	1,326	196,153	175,373	89.4	20,780	10.6	1,052,396	0
June	398	753	101,150	90,602	89.6	10,548	10.4	251	484	67,150	50,620	75.4	16,530	24.6	583,283	0
July	0	0	35	0	0.0	35	100.0	785	1,529	212,087	161,103	76.0	50,984	24.0	453,944	0
August	583	999	167,247	157,121	93.9	10,126	6.1	206	399	64,213	57,463	89.5	6,750	10.5	1,164,653	0
September	666	1,401	172,243	160,130	93.0	12,113	7.0	27	46	0	0	0.0	0	0.0	1,013,865	0
October	743	1,472	202,532	192,383	95.0	10,149	5.0	0	0	0	0	0.0	0	0.0	845,328	0
November	713	1,389	189,638	174,116	91.8	15,522	8.2	0	0	0	0	0.0	0	0.0	547,426	0
December	253	493	66,887	61,398	91.8	5,489	8.2	519	1,008	144,975	126,289	87.1	18,686	12.9	465,070	0

GBF Energy Utilization - R2E2



	MAR 2023	APR 2023	MAY 2023	JUN 2023	JUL 2023	AUG 2023	SEP 2023	OCT 2023	NOV 2023	DEC 2023	JAN 2024	FEB 2024
Purchased Electricity, MWH	2,209	2,122	1,870	1,752	1,762	1,782	1,667	1,656	1,777	1,679	1,882	1,758
Generated Electricity, MWH	1,407	1,442	1,511	1,237	1,529	1,398	1,446	1,472	1,389	1,501	1,366	1,359
Biogas Utilized, %	99.2	93.4	98.0	94.3	96.2	93.7	92.0	95.4	93.2	98.6	99.5	90.3

Memorandum

TO: Commissioners

FROM: Tom Sigmund

DATE: March 27, 2024

SUBJECT: March Commission Meeting – Executive Director’s Report

- a) The April Commission meeting will be held on Wednesday, April 24, 2024, beginning at 8:30 a.m. This meeting will be a hybrid meeting, held in person, as well as via Zoom videoconference.
- b) Congratulations to Ethan Wandersee who was promoted to Operations Trainer on March 4, 2024. Ethan joined NEW Water in March of 2017 as a Treatment Department Limited Term Employee to help support the construction and startup of the R2E2 project. Ethan was hired on as full time employee in the fall of 2017 and progressed through the training program to become an Operator III in late 2018. During his time here, Ethan has been involved in the development and training of Interns, Youth Apprentices, and newly hired Operators. We are pleased to see him accept this new challenge and look forward to his continued growth.
- c) On March 14, 2024, NEW Water honored Lynn Terrien with the 2024 NEW Watershed Champion Award.

Terrien’s dedicated career includes work as a science educator, and as one of the original teachers of the [Lower Fox River Watershed Monitoring Program](#), where she currently serves as Outreach and Education Coordinator.



Naming a NEW Watershed Champion comes as part of NEW Water’s commemoration of [World Water Day](#), an event established by the United Nations in 1993 to bring awareness to global water issues.

The award was presented during the 2024 annual Watershed Symposium at the University of Wisconsin-Green Bay.



NEW Water hosted an educational booth to promote its Youth Apprenticeship Program, internships, and careers in wastewater. NEW Water presented at the symposium to offer an overview of our watershed efforts, as well as the critical role our organization plays in our community.

Past Award recipients include the Wisconsin Department of Natural Resources for leading PCB remediation efforts of the Fox River, Brickstead Dairy for conservation efforts on their family farm, and Charlie Frisk, science educator and President of the Baird Creek Foundation.

Learn more and see the full list of past recipients [here](#).

- d) The following policies, which are under the approval of the Executive Director, have been recently reviewed and transitioned to our new policy format. They are included in the commission packet for your visibility.
- Radiation Safety Policy
 - Safety Shoe and Safety Glasses Policy