



I&I Program Alternatives



NEW Water SAG Meeting, Green Bay, WI // April 4, 2022



I&I Program Alternatives

Meeting Agenda



CONSIDERATIONS



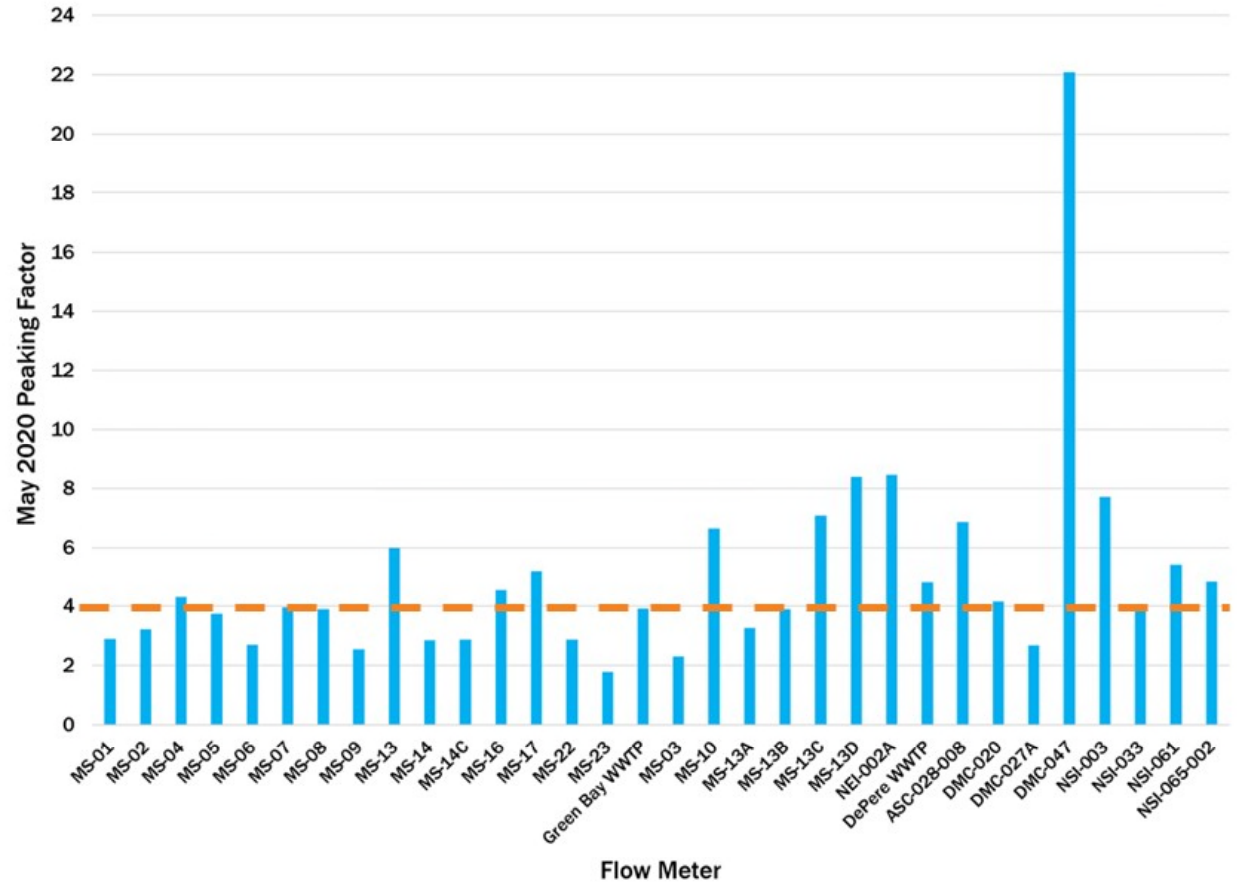
I&I PROGRAM
ELEMENTS



DISCUSSION

Meeting Objectives

- Explore alternative I&I program elements
- Obtain input on alternative elements



Review of Existing Regional I&I Programs

- Milwaukee Metropolitan Sewerage District (Milwaukee MSD)
- Metropolitan Council Environmental Services (MCES)
- Northeast Ohio Regional Sewer District (NEORSD)
- East Bay Municipal Utility District (EBMUD)
- Hampton Roads Sanitation District (HRSD)
- King County, Washington Wastewater Treatment Division (WTD)





Stakeholder Feedback

Most municipal customers are doing some I&I mitigation work

Most are interested in standard policies, ordinances, SOPs, flow monitoring

Most are interested in NEW Water providing public information/outreach

Most want to collaborate with others on I&I mitigation techniques and lessons learned

Many know that private property is a large contributor of I&I but is challenging to address

Some are worried about NEW Water rate increases to support the I&I program

Some are not interested in mandatory flow compliance

Some are concerned about the equitable use of funds

I&I Program Alternatives

ALTERNATIVE 1

- Limited NEW Water involvement with implementation
- Activities focused on info collection and dissemination
- Municipal customers informed on I&I topics and current I&I status compared to established flow limit

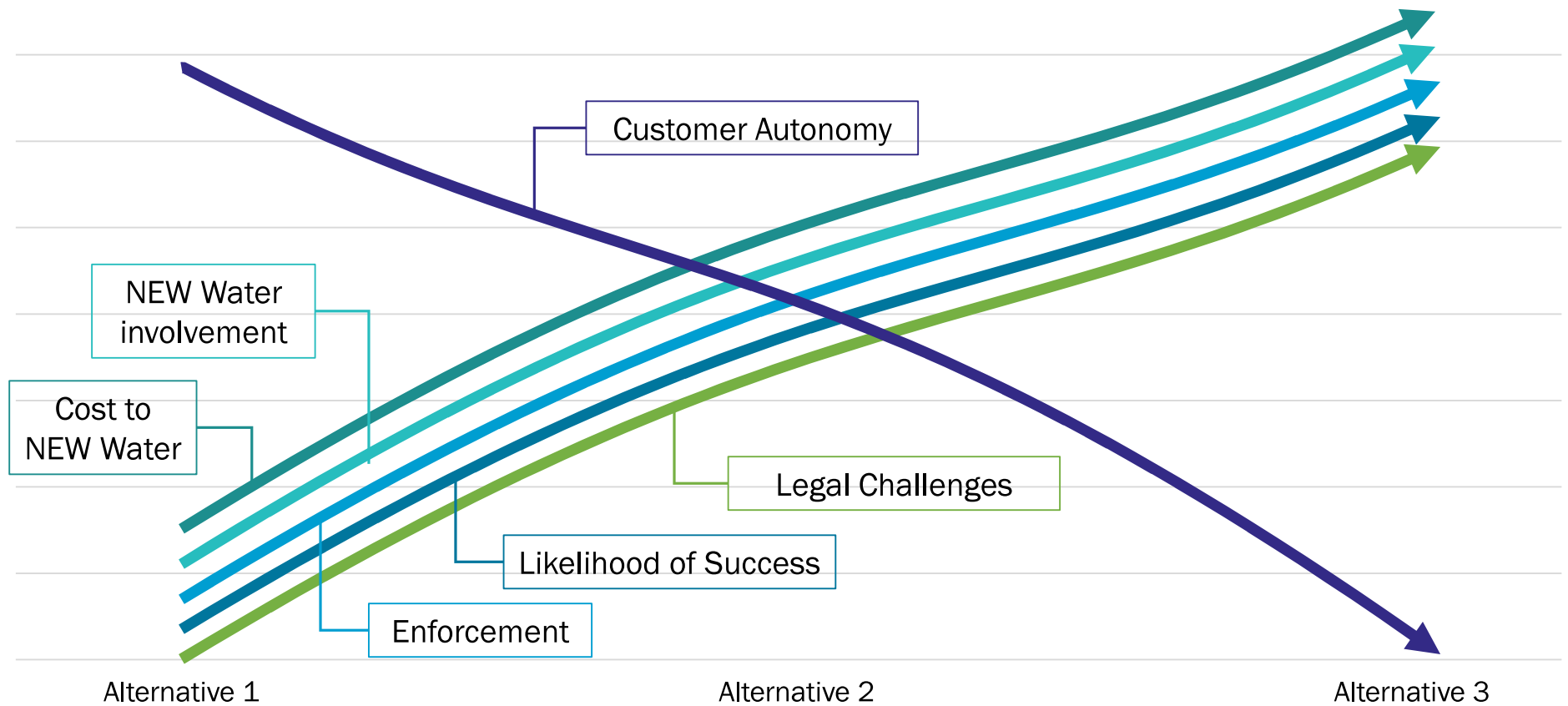
ALTERNATIVE 2

- Moderate NEW Water involvement with implementation
- Required actions by municipal customers if exceed certain flow limits

ALTERNATIVE 3

- Significant NEW Water involvement with implementation
- Required actions by municipal customers if exceed established flow limits
- Mandatory requirements and stricter enforcement policy for non-compliance

I&I Program Alternatives



I&I Program Elements

Education Assistance

- Public outreach and education
- Marketing

Technical Assistance

- Flow monitoring
- Design standards and approaches

Financial Assistance

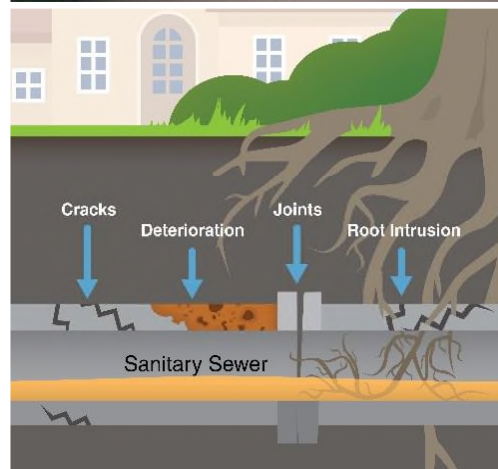
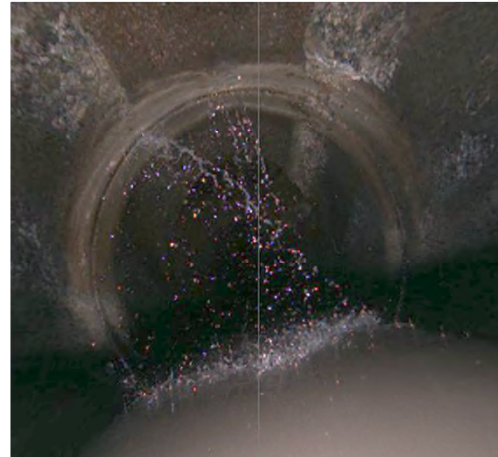
- Extent NEW Water will be paying for activities

Flow Limits

- Setting limits and identifying excess flow

Enforcement

- Enforcing flows that exceed limits

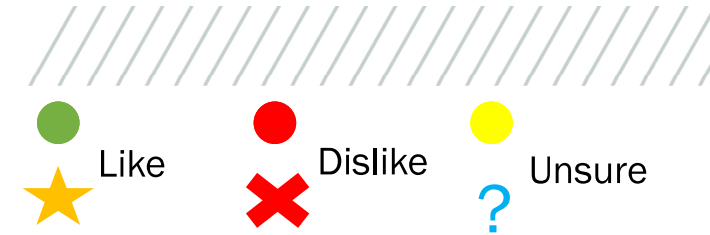


Polling Options

In-Person Stickers:  Like  Dislike  Unsure

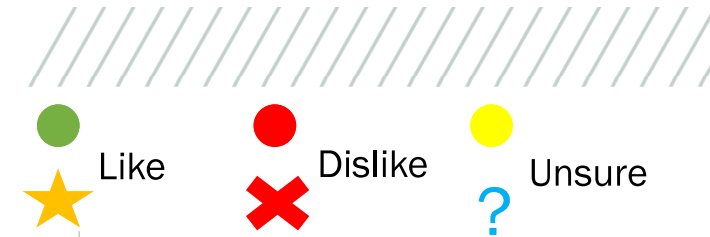
Virtual Stamping:  Like  Dislike  Unsure

Discussion: Education Assistance



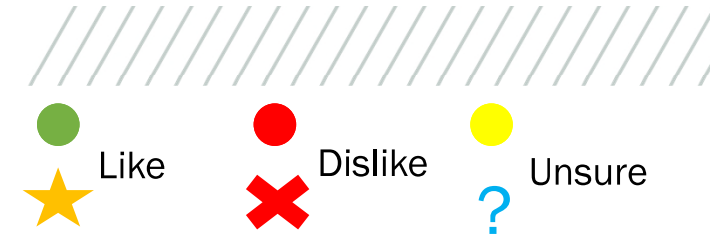
	ALTERNATIVE 1	ALTERNATIVE 2	ALTERNATIVE 3
Theme	Limited NEW Water involvement	Moderate NEW Water involvement	Significant NEW Water involvement
NEW Water Role	Resource for monitoring educational material available from national sources like WEF	Develop general template materials for municipal use	Provide general and subject specific templates Customize outreach to municipality
Municipality Requirement	Made aware of available resources	Encouraged to use templates	Engage with NEW Water to take advantage of outreach campaign

Discussion: Technical Assistance



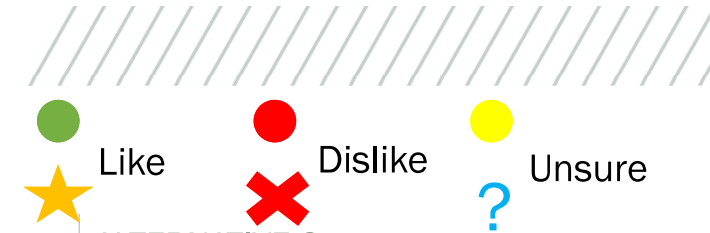
	ALTERNATIVE 1	ALTERNATIVE 2	ALTERNATIVE 3
Theme	No technical assistance	Some technical assistance and provided services	Requirements provided by NEW Water Work completed by NEW Water staff and consultants
NEW Water Role	Host periodic collaboration meetings	Host periodic collaboration meetings Provide example ordinances, SOPs, design standards Offer flow monitoring services	Host periodic collaboration meetings Provide example ordinances, SOPs, design standards Conduct flow monitoring and analysis in areas of concern to manage flow ordinance
Municipality Requirement	Self-perform work as needed	Use NEW Water assistance as needed	Obligated to use NEW Water support in areas exceeding standard

Discussion: Financial Assistance



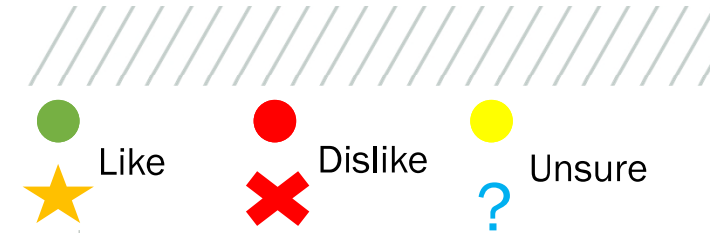
	ALTERNATIVE 1	ALTERNATIVE 2		ALTERNATIVE 3	
Theme	No funding assistance	Some funding assistance available	Deposit-Refund	Funding available for investigations	Funding available for PPII work
NEW Water Role	None	Loan and/or grant for use on investigation and/or private property activities	Funding is proportional to municipal customer contribution to annual budget	Grants for investigation work and for performing private property I&I source removal work	Distribution based on greatest need and most significant impact.
Funding	None	Funding managed by NEW Water	Funds collected from customers	Funding managed by NEW Water	Funds collected from customers
Municipality Requirement	Self-funded as needed	Required to provide matching funds if regional grant funds utilized		Required to use grant funding and establish PPII program for areas exceeding flow standards	Required to provide matching funds if regional grant funds utilized

Discussion: Flow Limits



	ALTERNATIVE 1	ALTERNATIVE 2		ALTERNATIVE 3	
Theme	Consistent I&I rate limits throughout the service area	Existing flow limits plus SUO revisions		Existing flow limits plus SUO revisions	Flow exceedances based on a model calibrated to flow meter data
NEW Water Role	Measure flow at Contracted Interceptor Locations	Measure at Contracted Interceptor Locations and Tributary Areas suspected of high wet weather flow		Measure at Contracted Interceptor Locations and Tributary Areas suspected of high wet weather flow	Re-calibrate model on a 5-year rotating basis
Flow Limits Base on	Measured flow at Contracted Interceptor Locations	Measured flow at Contracted Interceptor Locations	Measured flow at tributary areas suspected of high wet weather flow	Model calibrated to measured flow data to determine compliance with limits	
Focus Area	Interceptor section	Interceptor section	Tributary area to deployed flow meters	Interceptor section	Tributary area to deployed flow meters
Condition (peak flow and/or volume)	Peak Flow	Peak Flow	Volume	Peak Flow	Volume

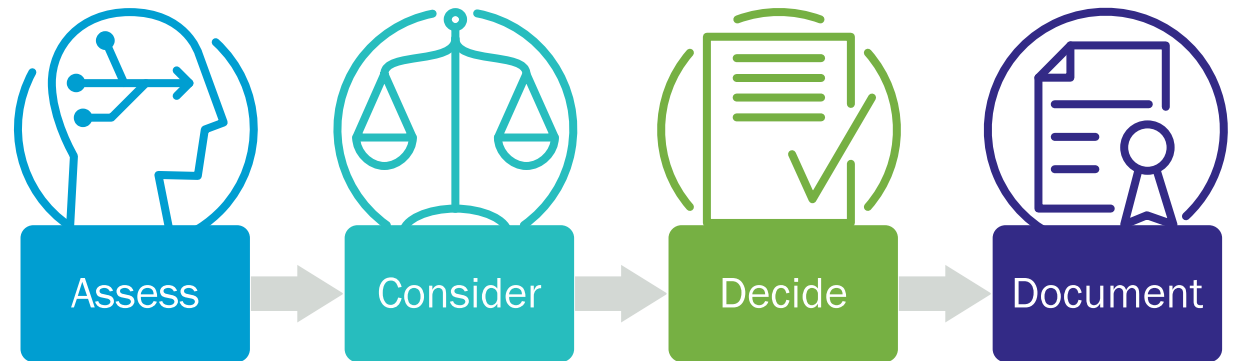
Discussion: Enforcement



	ALTERNATIVE 1			ALTERNATIVE 2		ALTERNATIVE 3
Theme	Collaborative			Collaborative		Mandatory Collaboration
NEW Water Role	NEW Water reaches out to each municipal customer individually to discuss their status			Annual status meeting, likely individual but also overall		Annual status meeting
Phased Approach (Municipality Requirement and Non-compliance penalties)	Phase 1 = Work plan to achieve compliance with available funding	Phase 2 = Work plan with a 5-year compliance schedule	Phase 3 = Work plan with a 5-year compliance schedule plus fines or penalties	Phase 1 = Work plan with a 5-year compliance schedule	Phase 2 = Work plan with a 5-year compliance schedule plus fines or penalties	Phase 1 = Work plan with a 5-year compliance schedule plus fines or penalties

Next Steps

- Update TM3: I&I Program Alternatives
- Provide recommendation for program framework



Thank you.

Questions?

Brown AND **Caldwell** :



