

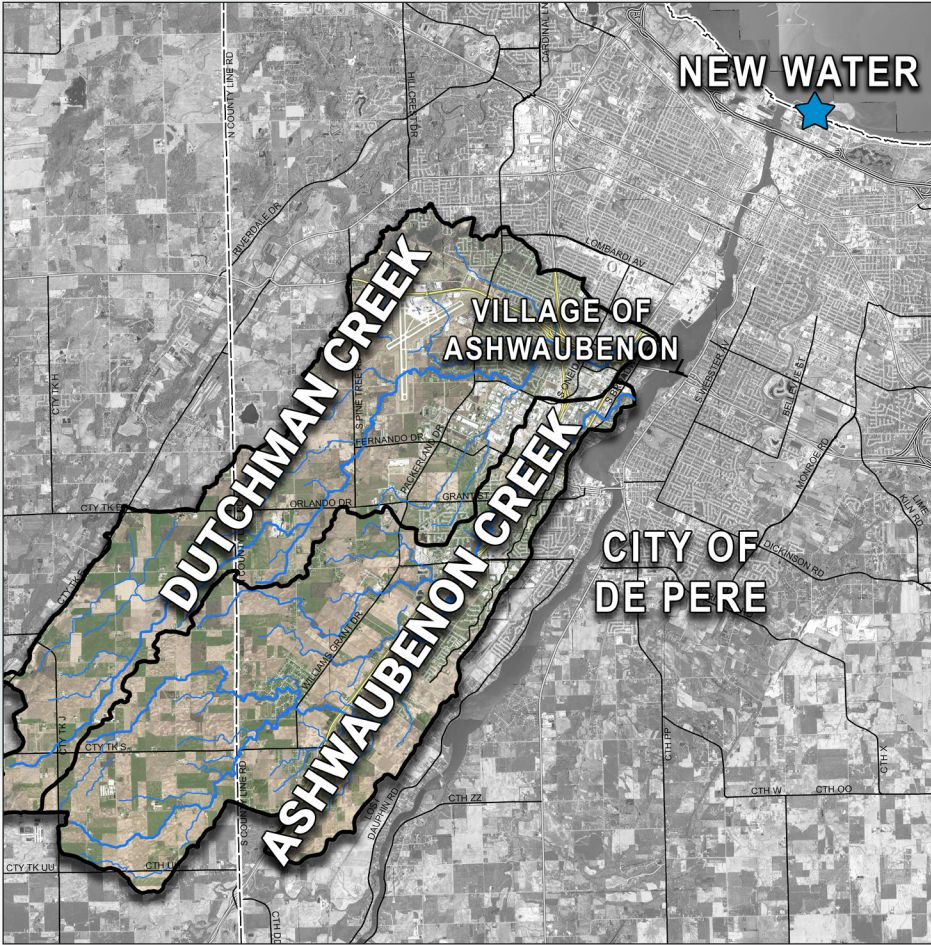
# ASHWAUBENON & DUTCHMAN CREEKS WATERSHEDS

NEW Water, the brand of the Green Bay Metropolitan Sewerage District, is working in the watershed to cost effectively achieve permit compliance.

The organization's NEW Watershed Program Team is actively implementing conservation practices in the Ashwaubenon & Dutchman Creeks (ACDC) watersheds, which encompass nearly 40,000 acres. This Program focuses on improving water quality through partnerships and collaboration.

As you are a part of this region, you have many opportunities to partner with the Program to implement best management practices (BMPs) that will enhance your agricultural activities while helping improve regional water quality.

This brochure outlines the types of funds payable to cost share recipients per the Pay-for-Performance system upon implementing and maintaining BMPs as outlined in the cost share agreement.



#LOVEYOURWATERSHED

WWW.NEWWATER.US



CONTACT INFORMATION:  
NIKKI RAIMER  
Watershed Field Coordinator

(920) 915-6106  
nikki.raimer@jacobs.com

NEW Water  
2231 N. Quincy Street  
Green Bay, WI 54302



## ACDC Accomplishments

Program Installed  
Operational Practices  
**6,243.9 acres**

Program Installed  
Structural Practices  
**56**

Acres of  
Cover Crops  
in 2022  
**1,589 acres**

Acres of  
No-Till  
in 2022  
**565 acres**

## 15 Clean Water Pledges Signed



Take the pledge today:  
<https://bit.ly/CleanH2OPledge>



**PAY FOR PERFORMANCE  
COST SHARE FUNDING  
YEAR 2023**



COVER CROP
\$10 - \$65/ACRE

Corn Silage: \$10/acre for planting; plant winter wheat, winter barley, rye, triticale or clover, add \$25/acre
• 10% cover established: increased planting payment to \$30/acre
• 20% cover establishment: increased planting payment to \$40/acre

Soybeans or HM Corn: \$35/acre for planting; plant winter wheat, winter barley, rye, triticale or clover, add \$25/acre
• 10% cover establishment: increased planting payment to \$40/acre

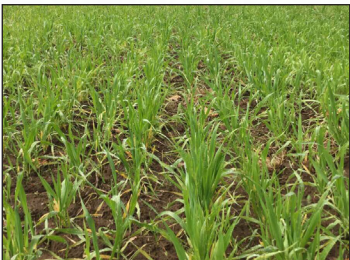
Corn Grain: \$40/acre for planting; plant winter wheat, winter barley, rye, triticale or clover, add \$25/acre

Winter Wheat: \$10/acre for planting; plant rye, triticale or clover, winter barley add \$25/acre
• 60% cover establishment: increased planting payment to \$40/acre

NOTE: To qualify as a cover crop, wheat and rye must be terminated prior to boot stage.



Winter Rye after Corn Silage / 30% cover \$65/acre



Winter Wheat after Soybean / 60% cover \$65/acre



Winter Rye after Corn Grain / 10% cover \$65/acre

Watershed Field Coordinator will measure cover crop establishment after planting.

INTERSEEDING
\$50 - \$75/ACRE

\$50/acre for planting (using available equipment)
\$75/acre for winter wheat, winter barley, rye, triticale or clover



Aerial seeding Winter Rye after Corn Silage: \$75/acre



Broadcast Orchardgrass after planting Corn Grain: \$75/acre



Cover Crop after Interseeding Corn Silage: \$75/acre

Watershed Field Coordinator must approve seed mix and planting time prior to seeding.

Contact Nick Peltier, Brown County Land & Water Conservation Department, for information on available equipment at (920) 284-9349.

ALFALFA WITH GRASS
\$40/ACRE OR ADDED LATER \$20/ACRE

Benefits of Alfalfa with grass:
Planted when established \$40/acre or added later \$20/acre

- More persistent crop through the winter
- Creates weed and erosion control



Watershed Field Coordinator must verify after establishment.

LOW DISTURBANCE MANURE APPLICATION
\$30 - \$50/ACRE

The goal of Low Disturbance Manure Application (LDMA) is to minimize the physical disturbance of the soil.



Table with 4 columns: Spring/Pre-Planting, Summer/Actively Growing Crop, Fall/Post Harvest Living Cover, Fall/Post Harvest Bare Ground. Rows show payment amounts per acre: \$40, \$50, \$40, and \$30 respectively.

No surface application • No tillage pre and post LDMA

Watershed Field Coordinator must verify after manure application.

For more information on LDMA and available equipment, please contact Andy Kiefer, Outagamie County Land Conservation Department at (920) 574-7539 or Nick Peltier, Brown County Land & Water Conservation Department at (920) 284-9349.

RESIDUE / TILLAGE MANAGEMENT
\$10 - \$25/ACRE

Following Corn Grain Harvest:

- 30% - 50% residue or no-till: \$10/acre
- 51% - 70% residue and no-till: \$16/acre
- >70% residue and no-till: \$20/acre
- Planting-Green: \$25/acre



Watershed Field Coordinator will measure residue and verify in spring after planting.

Following Other Crops Harvested:

- 25% - 35% residue or no-till: \$10/acre
- 36% - 50% residue and no-till: \$16/acre
- >50% residue and no-till: \$20/acre
- Planting-Green: \$25/acre

