

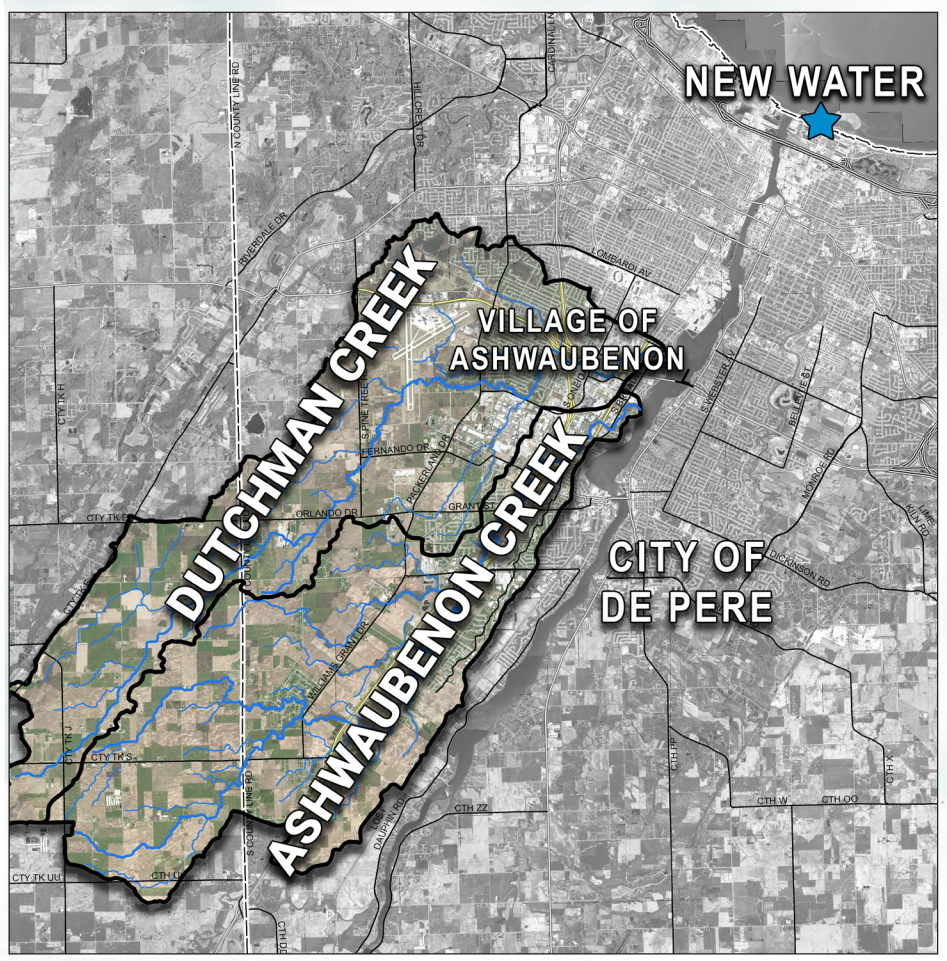
ASHWAUBENON & DUTCHMAN CREEKS WATERSHEDS

NEW Water, the brand of the Green Bay Metropolitan Sewerage District, is working in the watershed to cost effectively achieve permit compliance.

The organization's NEW Watershed Program Team is actively implementing conservation practices in the Ashwaubenon & Dutchman Creeks (ACDC) watersheds, which encompass nearly 40,000 acres. This Program focuses on improving water quality through partnerships and collaboration.

As you are a part of this region, you have many opportunities to partner with the Program to implement best management practices (BMPs) that will enhance your agricultural activities while helping improve regional water quality.

This brochure outlines the types of funds payable to cost share recipients per the Pay-for-Performance system upon implementing and maintaining BMPs as outlined in the cost share agreement.



#LOVEYOURWATERSHED

WWW.NEWWATER.US



CONTACT INFORMATION:
NIKKI RAIMER
 Watershed Field Coordinator

(920) 915-6106
 nikki.raimer@jacobs.com

NEW Water
 2231 N. Quincy Street
 Green Bay, WI 54302



ACDC Accomplishments

Program Installed
 Operational Practices
10,853 acres

Program Installed
 Structural Practices
97

Acres of
 Cover Crops
 in 2023
3,391 acres

Acres of
 No-Till
 in 2023
1,128 acres

16 Clean Water Pledges Signed



Take the pledge today:
<https://bit.ly/CleanH2OPledge>



**PAY FOR PERFORMANCE
 COST SHARE FUNDING
 YEAR 2024**

COVER CROP

\$10 - \$65/ACRE

Corn Silage or Alfalfa: \$10/acre for planting; plant winter wheat, winter barley, rye, triticale or clover, add \$25/acre

- 10% cover established: increased planting payment to \$30/acre
- 20% cover establishment: increased planting payment to \$40/acre

Soybeans or HM Corn: \$35/acre for planting; plant winter wheat, winter barley, rye, triticale or clover, add \$25/acre

- 10% cover establishment: increased planting payment to \$40/acre

Corn Grain: \$40/acre for planting; plant winter wheat, winter barley, rye, triticale or clover, add \$25/acre

Winter Wheat: \$10/acre for planting; plant rye, triticale or clover, winter barley add \$25/acre

- 60% cover establishment: increased planting payment to \$40/acre

NOTE: To qualify as a cover crop, wheat and rye must be terminated prior to boot stage.



Winter Rye after
Corn Silage / 30% cover
\$65/acre



Winter Wheat after
Soybean / 60% cover
\$65/acre



Winter Rye after
Corn Grain / 10% cover
\$65/acre

Watershed Field Coordinator will measure cover crop establishment after planting.

INTERSEEDING

\$50 - \$75/ACRE

\$50/acre for planting (using available equipment)
\$75/acre for winter wheat, winter barley, rye, triticale or clover



Drone or Aerial seeding
Winter Wheat after
Soybeans: \$75/acre



Broadcast Orchardgrass after
planting Corn Grain: \$75/acre



Cover Crop after Interseeding
Corn Silage: \$75/acre

Watershed Field Coordinator must approve seed mix and planting time prior to seeding.

Contact Nick Peltier, Brown County Land & Water Conservation Department, for information on available equipment at (920) 284-9349.

ALFALFA WITH GRASS

\$40/ACRE OR ADDED LATER \$20/ACRE

Benefits of Alfalfa with Grass:

Planted when established \$40/acre or added later \$20/acre

- More persistent crop through the winter
- Creates weed and erosion control



Watershed Field Coordinator must verify after establishment.

LOW DISTURBANCE MANURE INJECTION

\$30 - \$50/ACRE

The goal of Low Disturbance Manure Injection (LDMI) is to minimize the physical disturbance of the soil.



Low Disturbance Manure Injection (LDMI) Incentive

Spring/Pre-Planting	Summer/Actively Growing Crop	Fall/Post Harvest Living Cover	Fall/Post Harvest Bare Ground
\$40 per acre	\$50 per acre	\$40 per acre	\$30 per acre

No surface application • No tillage pre and post LDMI

Watershed Field Coordinator must verify after manure application.

For more information on LDMI and available equipment, please contact Andy Kiefer, Outagamie County Land Conservation Department at (920) 574-7539.

RESIDUE / TILLAGE MANAGEMENT

\$10 - \$30/ACRE

Following Corn Grain Harvest:

- 30% - 50% residue or no-till: \$10/acre
- 51% - 70% residue and no-till: \$16/acre
- >70% residue and no-till: \$20/acre
- Planting-Green: \$30/acre



Spring Termination Alfalfa - \$40/acre:

- 25% - 35% residue or no-till: add \$10/acre
- 36% - 50% residue and no-till: add \$16/acre
- >50% residue and no-till: add \$20/acre
- Planting-Green: add \$30/acre



Following Other Crops Harvested:

- 25% - 35% residue or no-till: \$10/acre
- 36% - 50% residue and no-till: \$16/acre
- >50% residue and no-till: \$20/acre
- Planting-Green: \$30/acre



Watershed Field Coordinator will measure residue and verify in spring after planting.